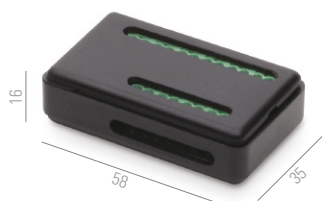


OPTIONAL ACCESSORIES

SMART DIMM MASTER 1



DIMMER INTERFACE OR 0-10V INTERFACE

code	input voltage	max No. fixtures*	IP	dimensions mm
69102	24V DC - 48V DC	read section optional accessories in each luminaire	IP20	W58xD35xH16

24V DC and 48V DC dimmer interface using push button, potentiometer or 0-10V active signal. Read wiring examples before installation

Dimming using push button

Four independent channels and check each luminaire into the catalogue for maximum number of fixtures to connect

Dimming using potentiometer

One channel and check each luminaire into the catalogue for maximum number of fixtures to connect

0-10V dimming, active signal required

One channel and check each luminaire into the catalogue for maximum number of fixtures to connect

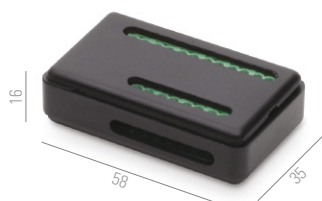
Connecting a SMART DIMM Slave 1 interface

Possibility to connect to the master, up to No. 32 SMART DIMM Slave 1 interfaces (code 69103).

The dimming signals generated by the master interface are replicated to the slaves



SMART DIMM SLAVE 1



DMX INTERFACE OR DIMMER INTERFACE SLAVE

code	input voltage	max No. fixtures*	IP	dimensions mm
69103	24V DC - 48V DC	read section optional accessories in each luminaire	IP20	W58xD35xH16

24V DC and 48V DC DMX interface or dimmer interface slave. Read wiring examples before installation

DMX dimming

Four independent channels and check each luminaire into the catalogue for maximum number of fixtures to connect

Dimming as a slave

When connected to the master interface, the dimming signals generated by the master are replicated to the slaves

