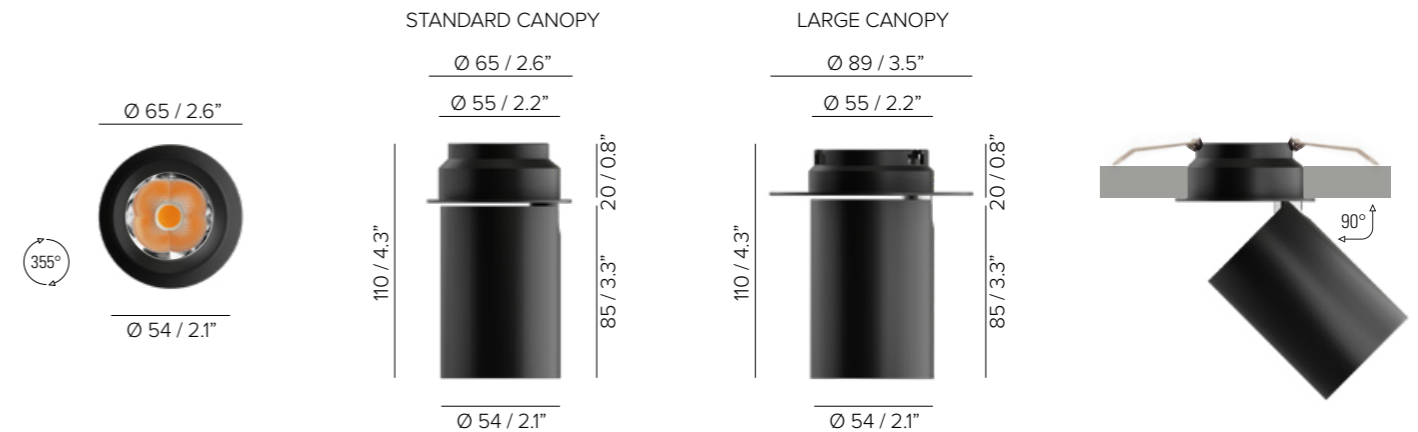
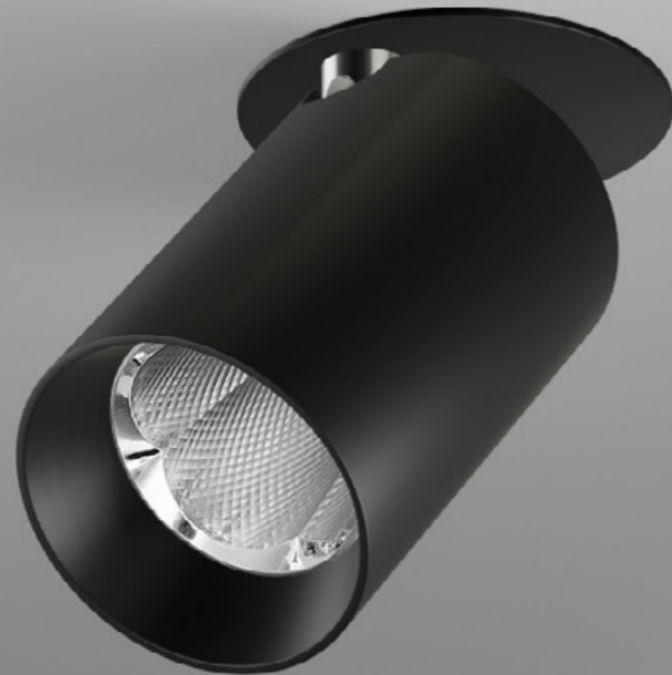


OKKIO 55 ADP




SPECIFICATIONS

base code	67146
typology	Recessed mounting luminaire with adjustable light distribution
mounting	In plasterboard using springs (included)
diameter	Cylinder: 54 mm / 2.1". Canopy: 65 mm / 2.6" (standard) or 89 mm / 3.5" (large)
height	110 mm / 4.3"
required depth	40 mm / 1.6"
ceiling cut out	57 mm / 2.24"
construction	Fixture and bezel: turning and milling aluminum. Reflector: polycarbonate
finishes	Powder coated
ingress protection	IP30. North America dry location
lamp type	COB. Remote power supply not included
lamp wattage	10W at 500 mA. Vf 17,8V DC. Tunable white: Maximum wattage 10W (CH1 + CH2 max 10W, one channel max 10W)
lamp lumens	980lm
delivered lumens	850lm (30°) - 930lm (50°)
lumen maintenance	50.000h L90
beam	30° or 50° 355° rotation and 90° tilt. Rotation via base and toolless adjustment that hold position with precision
kelvin	2700K CRI93, 3000K CRI93, 4000K CRI93 / 3 step MacAdam ellipse or Tunable white (1800K - 4000K) CRI93
special features	Safe wiring - Two wires dimming. Designed with high performance reflectors, delivers glare free homogeneous light. UGR<10 (30°), UGR<19 (50°)
dimming options	Push button, potentiometer, 0-10V, DALI, DMX, KNX. Dimming options depend on power supply and additional control units to be separately ordered as accessories
listings	CE, ETL listed for dry location






OKKIO 55 ADP

ORDER CODE

BASE CODE	A . POWER SUPPLY	B . KELVIN	C . BEAM
67146	L 500 mA power supply NOT included U  listed 500 mA power supply NOT included	4 4000K CRI93 5 3000K CRI93 8 2700K CRI93 7 tunable white 1800K - 4000K CRI93	4 spot 30° 5 flood 50°

Example: BASE CODE **67146** A **L** B **8** C **4** D **6** E **A** = **67146-L846A**

D . FINISHES	E . MOUNTING OPTIONS
2 black RAL 9005  6 white RAL 9003  F golden bronze 	A recessed standard canopy B recessed large canopy

OKKIO 55 ADP

ACCESSORIES

REQUIRED ACCESSORIES - NOT INCLUDED

code	output power	input voltage / frequency	IP	dimensions mm
69109	ON/OFF, 10W / max 1	198-264V	50-60Hz IP20	L100xW43XH23
69091	1-10V, 20W / max 2	99-264V	50-60Hz IP20	L120xW52XH22
69080	DALI, 20W / max 2	220-240V	50-60Hz IP20	L120xW52xH22
69206	DALI, 24W / max 2	99-264V	50-60Hz IP67	L122xW54xH26
69119	DALI DT8, 25W / max 2	198-264V	50-60Hz IP20	L123xW79XH30

Power supply 500 mA max No. fixtures
Power supply for Tunable white 500 mA max No. fixtures
Class 2 power supply 500 mA

Consult **B LIGHT North America**
 Lighting Group Network
 T: 212.775.6363
 E: info@lightinggroupnetwork.com

Power supply selection		
DC MIN Output (Vf)	LED < 17,8V DC (Vf)	DC MAX Output (Vf)