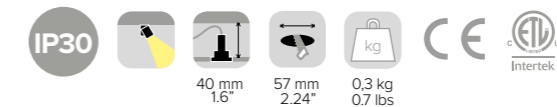
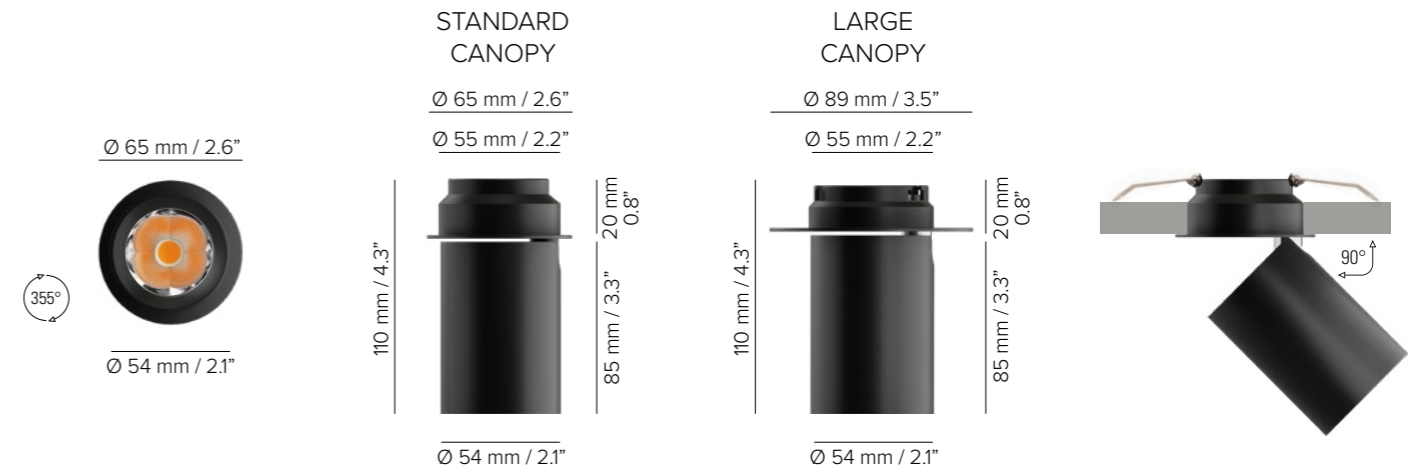
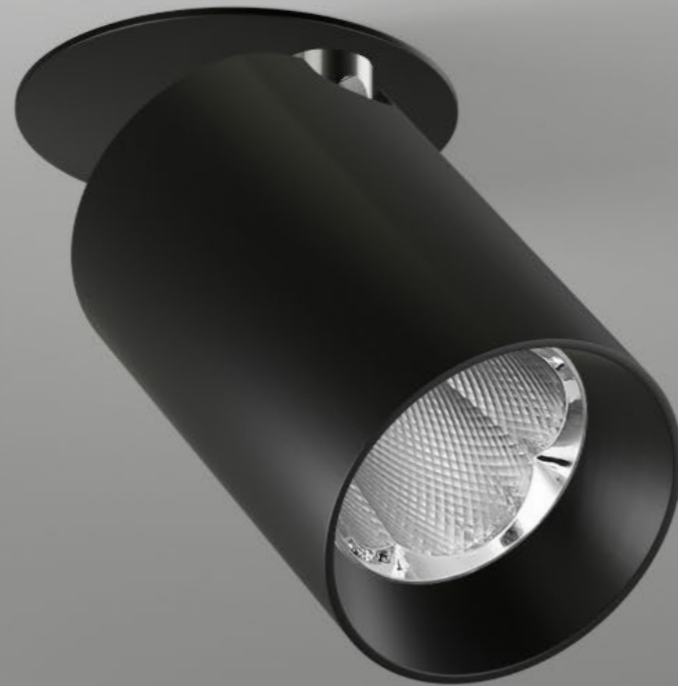


OKKIO 55 ADP

SPECIFICATIONS



base code	67146
typology	Recessed mounting luminaire with adjustable light distribution
mounting	In plasterboard using springs (included)
diameter	Cylinder: 54 mm / 2.1". Canopy: 65 mm / 2.6" (standard) or 89 mm / 3.5" (large)
height	110 mm / 4.3"
required depth	40 mm / 1.6"
ceiling cut out	57 mm / 2.24"
construction	Fixture and bezel: turning and milling aluminum. Reflector: polycarbonate
finishes	Powder coated
ingress protection	IP30. North America: dry location
lamp type	COB. Remote power supply not included
lamp wattage	10W at 24V DC and 500mA. For Yacht operating voltage 20V-30V. Vf 17,8V DC. Tunable white: max 10W at 500 mA (CH1 + CH2 max 10W, one channel max 10W). Vf 17,8V DC. Dim to warm: 10W at 280 mA. Vf 34V DC
delivered lumens	850lm (30°) - 930lm (50°)
lumen maintenance	50.000h L90
beam	30° or 50° 355° rotation and 90° tilt. Rotation via base and toolless adjustment that hold position with precision
kelvin	2700K CRI93, 3000K CRI93, 4000K CRI93 / 3 step MacAdam ellipse, tunable white 1800K - 4000K CRI93, or dim to warm 1800K - 3000K CRI93
special features	Safe Wiring. Two Wires Dimming. Designed with high performance reflectors, delivers glare free homogeneous light. UGR<10 (30°), UGR<19 (50°)
control protocols	0-10V, DMX or DALI
certifications	CE, ETL listed (certified to UL 2108, CSA C22.2)





OKKIO 55 ADP

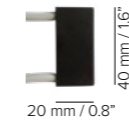
ORDER CODE

BASE CODE

67146

A . POWER SUPPLY

2 24V DC (20V - 30V)
FOR YACHT ONLY
power supply
NOT included



L 500 mA
power supply
NOT included

U listed
500 mA
power supply
NOT included

B . KELVIN

- 4** 4000K CRI93
- 5** 3000K CRI93
- 8** 2700K CRI93
- 7** tunable white
1800K - 4000K CRI93

C . BEAM

- 4** spot 30°
- 5** flood 50°



BASE CODE A B C D E

Example: **67146 L 8 4 6 A** = **67146-L846A**

D . FINISHES

2 black
RAL 9005



6 white
RAL 9003



F golden
bronze



E . MOUNTING OPTIONS

- A** recessed
standard canopy
- B** recessed
large canopy

ACCESSORIES

REQUIRED ACCESSORIES - NOT INCLUDED

Power supply
500 mA
max No. fixtures

code	output power	input voltage / frequency	IP	dimensions mm
69109	ON/OFF, 10W / max 1	198-264V 50-60Hz	IP20	L100xW43XH23
69091	1-10V, 20W / max 2	99-264V 50-60Hz	IP20	L120xW52XH22
69080	DALI, 20W / max 2	220-240V 50-60Hz	IP20	L120xW52xH22
69206	DALI, 24W / max 2	99-264V 50-60Hz	IP67	L122xW54xH26

Power supply
tunable white
500 mA
max No. fixtures

69119	DALI DT8, 25W / max 2	198-264V 50-60Hz	IP20	L123xW79XH30
-------	-----------------------	------------------	------	--------------

Class 2 power supply
500 mA
 listed

Consult **B LIGHT North America**
Lighting Group Network
T: 212.775.6363
E: info@lightinggroupnetwork.com

Power supply selection		
DC MIN Output (V)	LED DC Output (V)	DC MAX Output (V)
<	17.8V	<