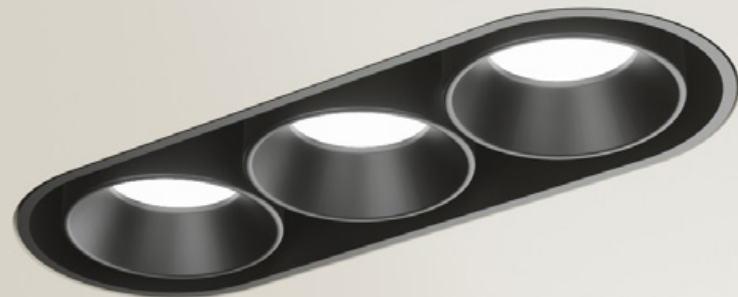
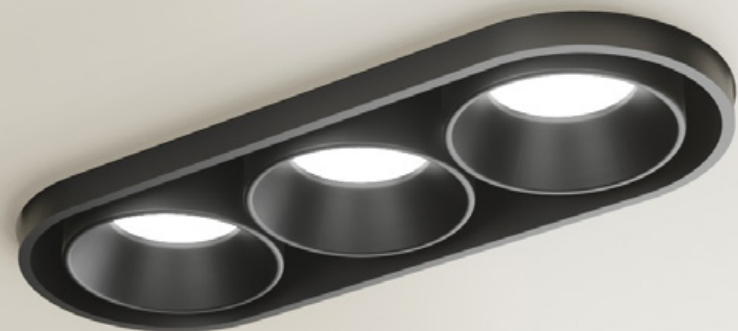


Design by Cristian Orlandi



FLUSH WITH SURFACE

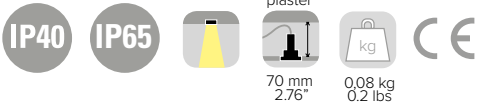
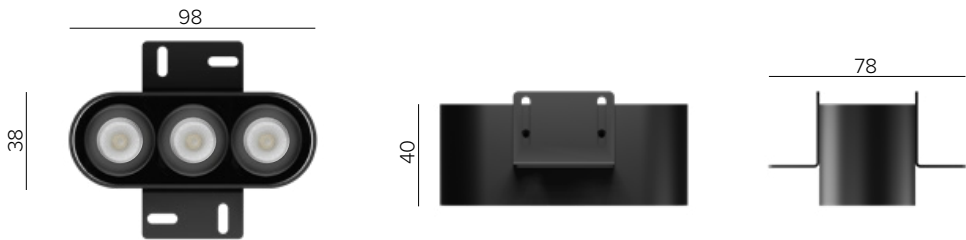


PROTRUDING 7 MM FROM SURFACE

# NICOLE

## SPECIFICATIONS

base code	64052 (one aperture), 64053 (two apertures), 64054 (three apertures)
typology	Trimless oval downlight
mounting	On wood panels, flush with the surface or protruding from the surface up to 7 mm / 0.28"
length	98 mm / 3.86"
width	78 mm / 3.07"
height	40 mm / 1.57"
required depth	70 mm / 2.76"
ceiling cut out	38 mm x 98 mm / 1.50" x 3.86" <i>(to be confirmed)</i>
construction	Fixture and bezel: turning and milling aluminum. Lens: PMMA
finishes	Anodized or powder coated when painted. Heat sink anodized
ingress protection	IP40 or IP65
lamp type	LED array on printed circuit board. Remote power supply
lamp wattage	3W (one aperture), 6W (two apertures) or 9W (three apertures) at 24V DC
lamp lumens	200lm per light
delivered lumens	160lm per light
lumen maintenance	50.000h L85
beam	15°, 34°, 40°
kelvin	Red, 2700K CRI93, 3000K CRI93 and 4000K CRI93 / 2 step MacAdam ellipse
special features	Red light for night navigation. Protection against wrong connections - Two wires dimming
dimming options	Maximum input voltage PWM frequency: 500 Hz. Push button, potentiometer, 0-10V, DALI. Dimming options depend on power supply and additional control units to be separately ordered as accessories
listings	CE



# NICOLE

## ORDER CODE

### BASE CODE

- 64052** One aperture
- 64053** Two apertures
- 64054** Three apertures

### A . POWER SUPPLY

- 2** 24V DC  
EXCL. power  
supply

### B . KELVIN

- 4** 4000K CRI93
- 5** 3000K CRI93
- 8** 2700K CRI93
- R** Red

### C . DIFFUSER

- 2** spot 15°
- 4** flood 34°
- 5** wide flood 40°

Example: BASE CODE  
**64052**    A   B   C   D   E  
             **2**   **5**   **2**   **2**   **A** = **64052-2522A**

### D . FINISHES

- 2** black  
RAL 9005
- X** custom RAL



### E . OTHER

- A** IP40
- C** IP65



ONE APERTURE



TWO APERTURES



THREE APERTURES