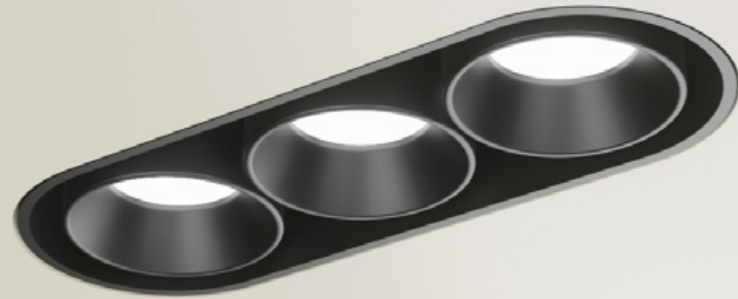
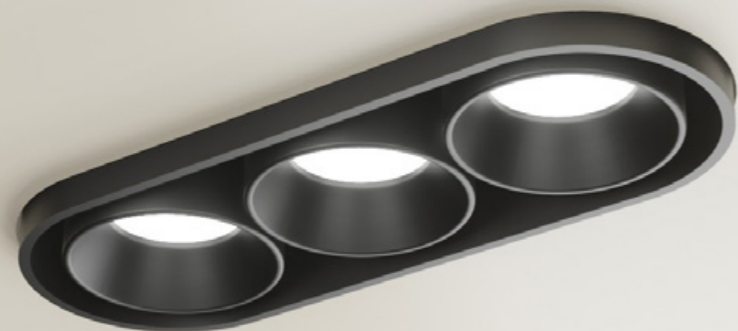


Design by Cristian Orlandi



FLUSH WITH SURFACE

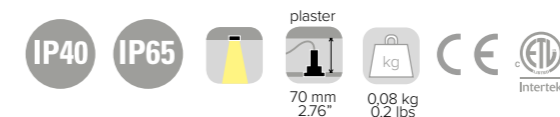
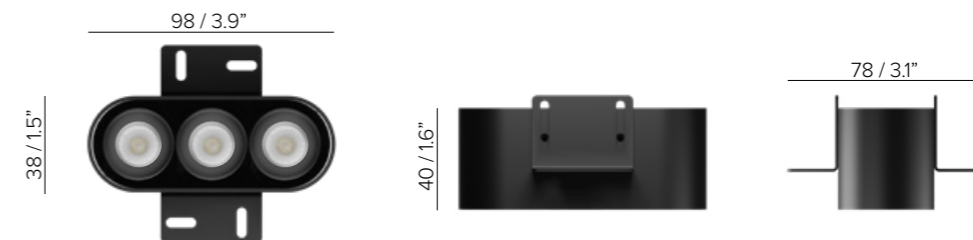


PROTRUDING 7 MM FROM SURFACE

NICOLE

SPECIFICATIONS

base code	64052 (one aperture) - 64053 (two apertures) - 64054 (three apertures)
typology	Trimless oval downlight
mounting	On wood panels, flush with the surface or protruding from the surface up to 7 mm / 0.28"
length	98 mm / 3.9"
width	78 mm / 3.1"
height	40 mm / 1.6"
required depth	70 mm / 2.8"
ceiling cut out	39 mm x 99 mm / 1.53" x 3.90"
construction	Fixture and bezel: turning and milling aluminum. Lens: PMMA
finishes	Anodized or powder coated when painted. Heat sink anodized
ingress protection	IP40 or IP65. North America damp or wet location
lamp type	LED array on printed circuit board. Remote power supply
lamp wattage	3W (one aperture), 6W (two apertures) or 9W (three apertures) at 24V DC. North America 700 mA
lamp lumens	200lm per light
delivered lumens	160lm per light
lumen maintenance	50.000h L85
beam	15°, 34°, 40°
kelvin	Red, 2700K CRI93, 3000K CRI93 and 4000K CRI93 / 2 step MacAdam ellipse
special features	Red light for night navigation. Protection against wrong connections - Two wires dimming
dimming options	Maximum input voltage PWM frequency: 500 Hz. Push button, potentiometer, 0-10V, DALI. Dimming options depend on power supply and additional control units to be separately ordered as accessories
listings	CE, ETL listed for wet location




NICOLE

ORDER CODE

BASE CODE

- 64052** One aperture
- 64053** Two apertures
- 64054** Three apertures

A . POWER SUPPLY

- 2** 24V DC
EXCL. power supply
- U**  listed
700 mA
power supply
NOT included

B . KELVIN

- 4** 4000K CRI93
- 5** 3000K CRI93
- 8** 2700K CRI93
- R** Red

C . DIFFUSER

- 2** spot 15°
- 4** flood 34°
- 5** wide flood 40°

Example: **BASE CODE** **A** **B** **C** **D** **E**
64052 **2** **5** **2** **2** **A** = **64052-2522A**

D . FINISHES

- 2** black
RAL 9005



- X** custom RAL



E . OTHER

- A** IP40
- C** IP65

ONE APERTURE

TWO APERTURES

THREE APERTURES

ACCESSORIES

REQUIRED ACCESSORIES - NOT INCLUDED

	code	output power	input voltage / frequency	IP	dimensions mm
Power supply 24V DC* ON/OFF	69041	18W	198-264V	50-60Hz	IP20 L124xW42xH30
	69054	60W	90-305V	47-63Hz	IP67 L162xW43xH32
Power supply 24V DC* DALI	69204	20W	99-264V	50-60Hz	IP20 L103xW67xH21
Power supply 24V DC* 1-10V	69212	20W	99-264V	50-60Hz	IP20 L103xW67xH21
Class 2 power supply 700 mA	Consult B LIGHT North America Lighting Group Network T: 212.775.6363 E: info@lightinggroupnetwork.com				