



MOUNTING FRAME FOR US MARKET

69542

MUSHROOM MINI PL

B LIGHT
DESIGNED TO PERFECTION



plaster



135 mm
5.31"



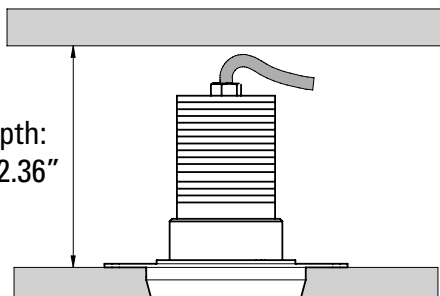
0.1 kg
0.2 lbs

1. INSTALLATION - INSTALLATION

EN: INSTALLATION ON PLASTERBOARD WITH REMOTE LED DRIVER

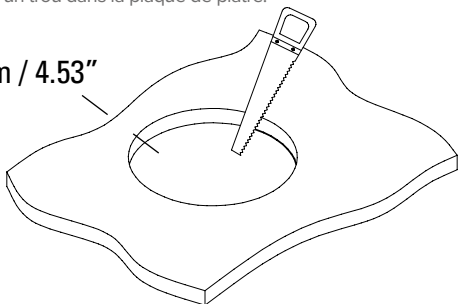
FR: INSTALLATION SUR PLAQUE DE PLÂTRE AVEC TRANSFORMATEUR À DISTANCE

Required depth:
min. 60 mm / 2.36"

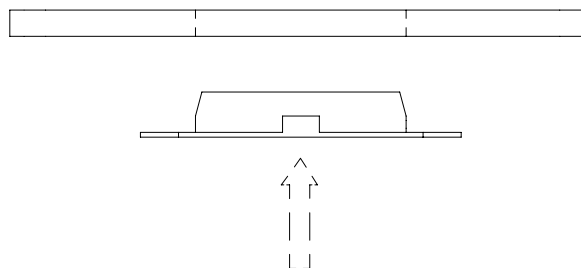


- 1 EN: Make a hole in the plasterboard.
FR: Faire un trou dans la plaque de plâtre.

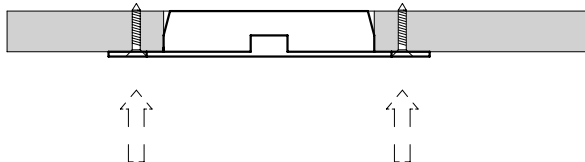
Ø115 mm / 4.53"



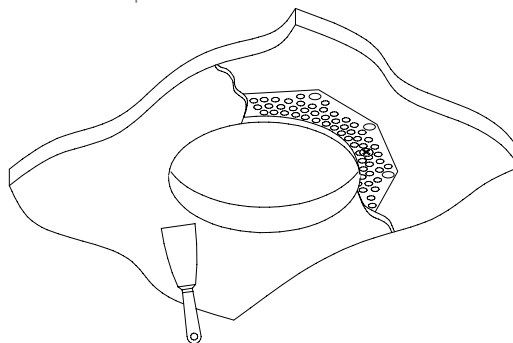
- 2 EN: Insert the housing box in the hole.
FR: installer la boîte d'encastrement dans le trou.



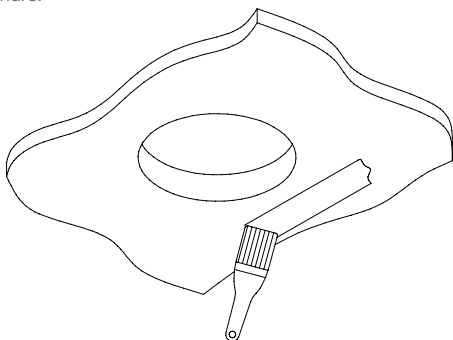
- 3 EN: Fix the housing box to the plasterboard by using self-threading screws.
Make sure the head of the screws being completely within the plasterboard.
FR: Fixer la BOÎTIER d'encastrement sur la plaque de plâtre en utilisant vis autotaraudeuses. S'assurer que les têtes des vis soient complètement dans la plaque de plâtre.



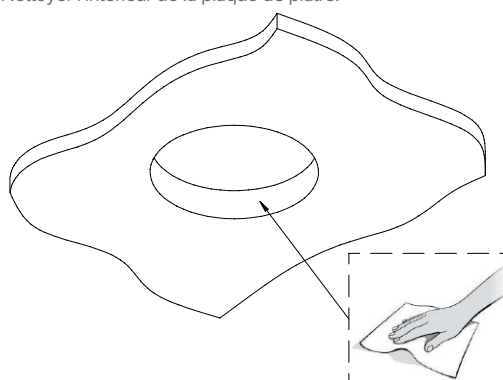
- 4 EN: Plaster and sand.
FR: Reboucher et poncer.



- 5 EN: Paint.
FR: Peindre.



- 6 EN: Clean the inside of the housing box.
FR: Nettoyer l'intérieur de la plaque de plâtre.



B LIGHT will not consider valid the warranty conditions and will decline any responsibility for damage when the installation is not carried out according to this installation manual.
B LIGHT ne considérera pas les conditions de garantie valables et déclinera toute responsabilité pour les dommages si l'installation n'est pas effectuée conformément à ce manuel d'installation.