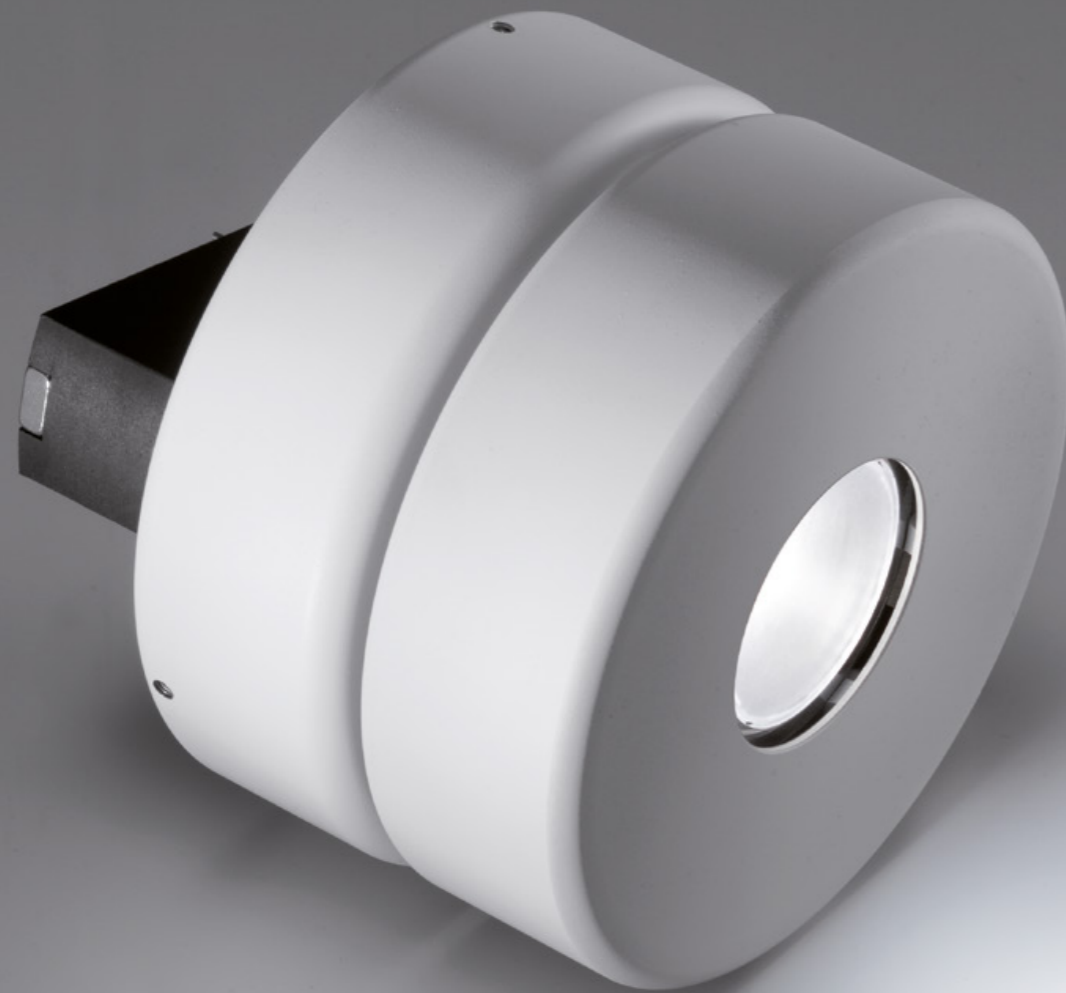


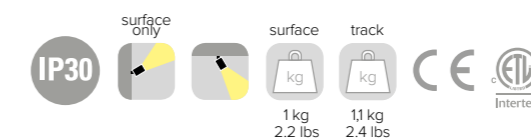
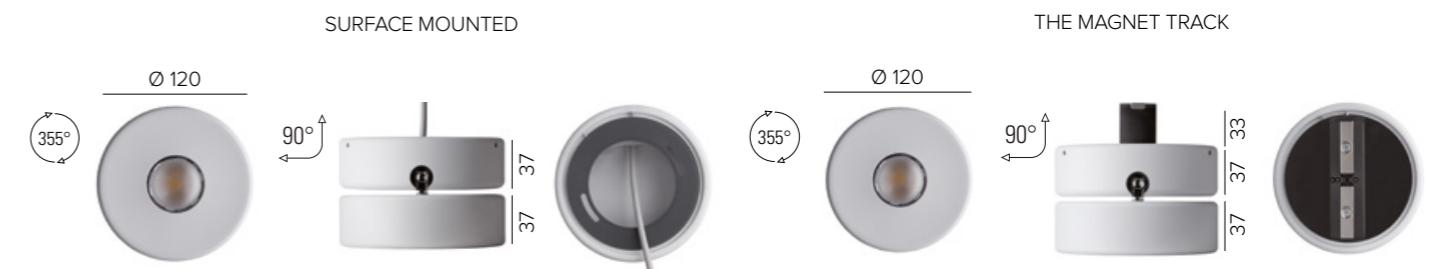
# MUSHROOM MEDIUM

## SPECIFICATIONS

base code	65214
typology	Projector
mounting	To surface using mounting plate or into The Magnet Track through a magnetic fixing
diameter	120 mm / 4.72"
height	78 mm / 3.07" - 111 mm / 4.37"
construction	Fixture: turning and milling aluminum. Reflector and protective glass in polycarbonate
finishes	Powder coated
ingress protection	IP30. North America dry location
lamp type	COB. Remote power supply not included
lamp wattage	16W at 48V DC and 500 mA. North America 500 mA (48V DC for The Magnet Track)
lamp lumens	2700K CRI93 - 1780lm, 3000K CRI93 - 1840lm, 4000K CRI93 - 1970lm
delivered lumens	1430lm (3000K CRI93, 37°)
lumen maintenance	50.000h L90
beam	26°, 37°, 51°. Adjustable 355° on the horizontal plane and 90° on the vertical plane
kelvin	2700K CRI93, 3000K CRI93 and 4000K CRI93 / 3 step MacAdam ellipse
special features	48V DC: unpolarized electronic system - Thermal Sensor - Safe wiring
dimming options	Push button, potentiometer, 0-10V, DALI, DMX, KNX. Dimming options depend on power supply and additional control units to be separately ordered as accessories
listings	CE, ETL listed for dry location



MUSHROOM MEDIUM FOR THE MAGNET TRACK



# MUSHROOM MEDIUM

## ORDER CODE

BASE CODE	A . POWER SUPPLY	B . KELVIN	C . BEAM	D . FINISHES	E . OTHER
<b>65214</b>	<b>8</b> 48V DC EXCL. power supply <b>L</b> 500 mA EXCL. power supply <sup>1</sup> <b>U</b> listed 500 mA EXCL. power supply <sup>1</sup> <b>S</b> listed 48V DC EXCL. power supply <sup>2</sup> <small><sup>1</sup>surface mounted only <sup>2</sup>The Magnet Track only</small>	<b>4</b> 4000K CRI93 <b>5</b> 3000K CRI93 <b>8</b> 2700K CRI93	<b>2</b> spot 26° <b>4</b> flood 37° <b>5</b> wide flood 51°	<b>2</b> black RAL 9005 <b>6</b> white RAL 9003	<b>A</b> surface mounted <b>B</b> The Magnet Track
Example: <b>65214 8 8 4 6 A = 65214-8846A</b>					



SURFACE MOUNTED

# MUSHROOM MEDIUM

## ACCESSORIES

### REQUIRED ACCESSORIES - NOT INCLUDED

code	output power	input voltage / frequency	IP	dimensions mm
69180	30W	90-264V	47-63Hz IP20	L160xW46xH30
69181	40W	90-305V	47-63Hz IP67	L163xW43xH32
69182	60W	90-305V	47-63Hz IP67	L163xW43xH32
69183	100W	90-264V	47-63Hz IP20	L201xW70xH35
69188	150W	90-305V	47-63Hz IP67	L228xW68xH39
69195	75W	100-305V	47-63Hz IP67	L180xW63xH36
69196	100W	100-305V	47-63Hz IP67	L199xW63xH36
69197	150W	100-305V	47-63Hz IP67	L219xW63xH36
69088	ON/OFF, 20W / max 1	100-264V	50-60Hz IP20	L135xW38xH28
69091	1-10V, 20W / max 1	99-264V	50-60Hz IP20	L120xW52xH22
69080	DALI, 20W / max 1	220-240V	50-60Hz IP20	L120xW52xH22

**Power supply 48V DC\* ON/OFF**  
**Power supply 48V DC\* DALI ON/OFF only**  
**Power supply 500 mA<sup>(1)</sup> max No. fixtures**  
**Class 2 power supply 500 mA<sup>(1)</sup> 48V DC<sup>(2)</sup>**

Consult **B LIGHT North America**  
 Lighting Group Network  
 T: 212.775.6363  
 E: info@lightinggroupnetwork.com  
<sup>1</sup>surface mounted only      <sup>2</sup>The Magnet Track only

code	page	description	dimensions mm
696	317	The Magnet Track F flush with the ceiling	W30xH50
696	319	The Magnet Track CL surface mounted	W30xH50
696	321	The Magnet Track SD pendant suspended	W30xH50

### OPTIONAL ACCESSORIES

code	page	description	input voltage	IP	dimensions mm
69102/69103		<b>Control unit 48V DC Dimmer interface 0-10V interface</b>			
69102	554	SMART DIMM MASTER 1 Dimmer interface master (four channels max 120 luminaires and No. 32 SMART DIMM SLAVE 1) or 0-10V interface (one channel max 120 luminaires and No. 32 SMART DIMM SLAVE 1, active signal is required)	48V DC	IP20	W58xD35xH16
69103	554	SMART DIMM SLAVE 1 DMX interface or dimmer interface slave (four channels max 120 luminaires)	48V DC	IP20	W58xD35xH16
69659/69660		<b>The Magnet Track 48V DC Dimmer interface 0-10V interface</b>			
69659	566	KIT DIMMER MASTER Dimmer interface master (two channels max 15 luminaires and No. 32 KIT DIMMER SLAVE) or 0-10V interface (one channel max 15 luminaires and No. 32 KIT DIMMER SLAVE, active signal is required)	48V DC	IP20	W58xD35xH16 W49xD25xH21
69660	566	KIT DIMMER SLAVE DMX interface or dimmer interface slave (two channels max 15 luminaires)	48V DC	IP20	W58xD35xH16 W49xD25xH21

