

MEROPE 140 WW

SPECIFICATIONS



EXCELLENT VERTICAL UNIFORMITY:
LIGHT IS CONVEYED PRECISELY TOWARDS THE WALL
FROM THE LOWER EDGE TO THE UPPER EDGE

base code	67056
typology	Wallwasher uplight with a drive over load of 3,5 tonnes / 7000 lbs
mounting	Using housing box to be separately ordered as accessory
diameter	Flush faceplate: 140 mm / 5.5". Protruding faceplate: 150 mm / 5.9"
height	100 mm / 3.9"
required depth	Depending on housing box
first fit requirement	Yes, separate housing box: code 69561 for millimetric height adjustments from 0 to 50 mm / from 0" to 2"
floor cut out	Depending on housing box
construction	Fixture: turning and milling aluminum. Faceplate in stainless steel AISI 304. Stainless steel A2 screws. Protective tempered glass complete with silicone gasket. Reflector: polycarbonate. Housing box in PVC
finishes	Fixture anodized and faceplate in brushed stainless steel AISI 304. Glass surface
ingress protection	IP67. North America: wet location. Built-in protection from water infiltration and moisture
lamp type	LED array on printed circuit board. Remote power supply not included
lamp wattage	16W at 24V DC
delivered lumens	570lm
lumen maintenance	50.000h L90
beam	Pure wallwasher: 5° - 75° towards the wall
kelvin	2200K CRI80, 2200K CRI90, 2700K CRI93, 3000K CRI93 and 4000K CRI93 / 3 step MacAdam ellipse
special features	Reverse Polarity Protection. Thermal Sensor. Safe Wiring. Two Wires Dimming. Water Stop Technology. Thanks to the design of the reflector, the luminaire offers longitudinal cut-off and delivers homogeneous light from the lower edge of the wall with no visible dark zones. Because light is precisely focused towards the wall, the luminaire is compliant with the rules against light pollution
control protocols	0-10V, DMX or DALI
certifications	CE, ETL listed (certified to UL 2108, CSA C22.2)

FLUSH FACEPLATE



Ø 140 mm / 5.5"

PROTRUDING FACEPLATE



Ø 150 mm / 5.9"



69561



Ø 195 mm / 7.7"



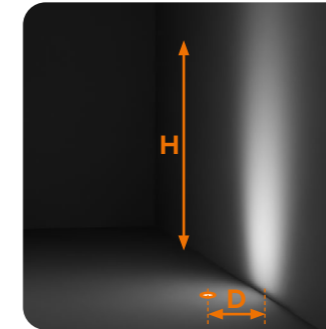
MEROPE 140 WW

INSTALLATION GUIDE

FOR A GOOD UNIFORMITY OF LIGHT ON THE WALL, FOLLOW THESE RULES:

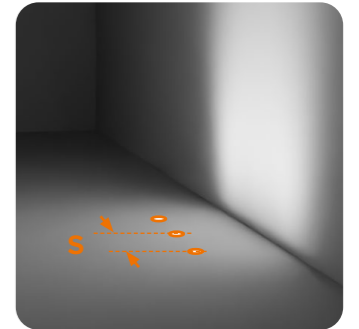
1

The **distance from the wall D** shall be $H / 5$



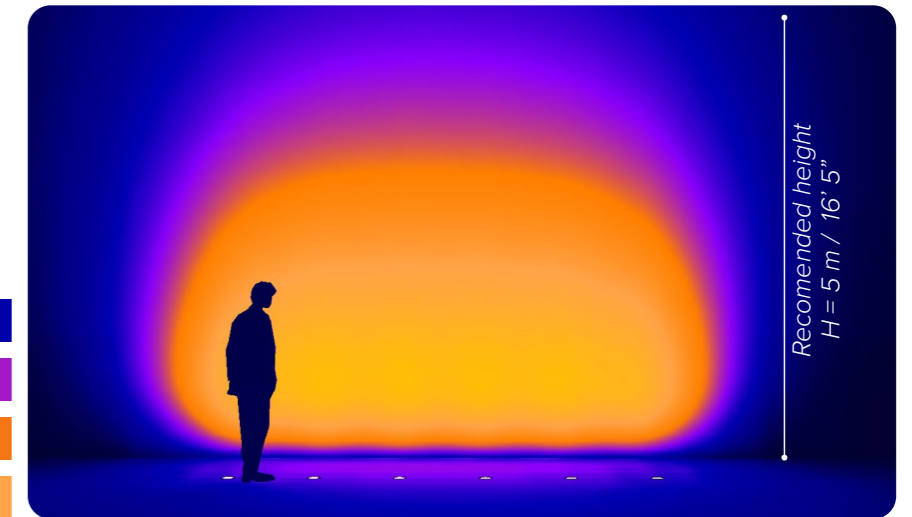
2

The **spacing between luminaires S** and the **distance from the wall D** shall be the same



Example

H	5 m / 16' 5"
S, D	1 m / 3' 3"



- 20lx
- 50lx
- 100lx
- 200lx

WALLWASHER OPTIONS

FOR DIFFERENT CEILING HEIGHTS



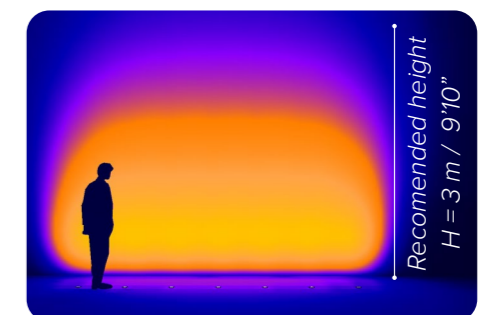
ATRIA IN
3W, 140lm delivered

SEE PAGE 41



MEROPE 100 WW
8W, 439lm delivered

SEE PAGE 51



Since every project is different, use this installation guide as a starting point for your lighting design. To further test the desired effect on your project, use the **photometric files** available on B LIGHT's website.



NO VISIBLE DARK ZONES
AND
LONGITUDINAL GLARE CONTROL

MEROPE 140 WW

ORDER CODE

BASE CODE
67056

A . POWER SUPPLY

- 9 24V DC power supply NOT included
- R listed 24V DC power supply NOT included

B . KELVIN

- 4 4000K CRI93
- 5 3000K CRI93
- 8 2700K CRI93
- D 2200K CRI90 *NORTH AMERICA ONLY*
- I 2200K CRI80

C . BEAM

- W wallwasher

D . FINISHES

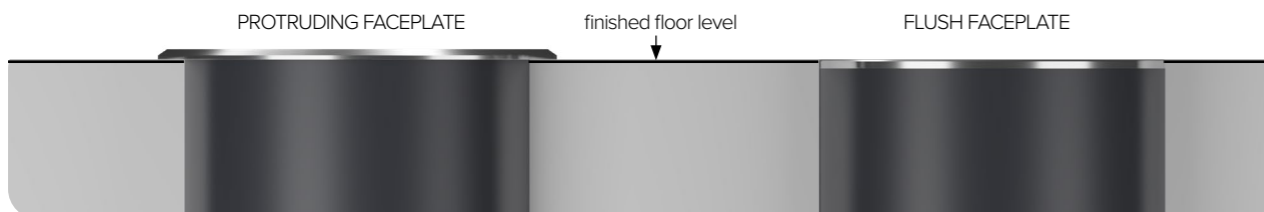
- A stainless steel flush faceplate
- B stainless steel protruding faceplate

E . OTHER

- S screws on faceplate

Example: BASE CODE A B C D E
67056 9 8 W B S = 67056-98WBS

FACEPLATE OPTIONS



MEROPE 140 WW

ACCESSORIES

REQUIRED ACCESSORIES - NOT INCLUDED



Power supply 24V DC*, ON/OFF ambient temperature up to 60° C

code	description	dimensions mm
69561	height adjustable housing box for concrete	Ø195xH120-170
69593	suction cup for the extraction of the luminaire	W80xH50

code	output power	input voltage / frequency	IP	dimensions mm
69061	40W	90-305V	47-63Hz	IP67 L171xW62xH37
69062	60W	90-305V	50-60Hz	IP67 L171xW62xH37
69063	100W	90-305V	50-60Hz	IP67 L220xW68xH39

Power supply 24V DC*, DALI

69220	120W	90-305V	47-63Hz	IP65 L191xW63xH38
-------	------	---------	---------	-------------------

Power supply 24V DC*, 0-10V

69215	60W	90-305V	47-63Hz	IP65 L150xW53xH35
-------	-----	---------	---------	-------------------

Class 2 power supply 24V DC* listed

Consult **B LIGHT North America**
Lighting Group Network
T: 212.775.6363
E: info@lightinggroupnetwork.com



code	description	dimensions mm
69842	IP68 connector, 1 IN - 1 OUT, 2 wires	W37xD22xH37
69847	IP68 connector, 1 IN - 3 OUT, parallel wiring, 2 wires	W45xD30xH17

*To choose the power supply, always add a spare 20% as safety margin.
See pag 519 for cable size and max wiring distance from power supply to last connected luminaire