

# MEROPE 100 WW



## SPECIFICATIONS

base code	67054
typology	Glare free wallwasher with a drive over load of 3,5 tonnes / 7000 lbs
mounting	Using housing box to be separately ordered as accessory
diameter	Flush faceplate: 100 mm / 3.94". Protruding faceplate: 115 mm / 4.53"
height	93 mm / 3.66"
required depth	Depending on housing box
first fit requirement	Yes, separate housing box: code 69477 or 69478 for millimetric height adjustment from 0 to 50 mm / from 0" to 1.97"
floor cut out	Depending on housing box
construction	Fixture: turning and milling aluminum. Faceplate in stainless steel AISI 316L. Stainless steel A2 screws. Protective tempered glass complete with silicone gasket. Reflector: polycarbonate. Housing box in PVC
finishes	Fixture anodized and faceplate in brushed stainless steel AISI 316L. Glass surface
ingress protection	IP67. North America wet location. Built-in protection from water infiltration and moisture
lamp type	LED array on printed circuit board. Remote power supply not included
lamp wattage	8W at 48V DC. North America 5W at 24V DC
lamp lumens	8W: 720lm - 5W: 450lm
delivered lumens	8W: 430lm - 5W: 300lm
lumen maintenance	50.000h L90
beam	Asymmetrical reflector: 5° - 75° towards the wall
kelvin	2200K CRI80, 2700K CRI93, 3000K CRI93 and 4000K CRI93 / 3 step MacAdam ellipse
special features	48V DC: unpolarized electronic system. 24V DC: reverse polarity protection. Thermal Sensor - Safe wiring - Two wires dimming - Water stop technology. Designed with an asymmetrical reflector offers longitudinal cut-off and delivers glare free homogeneous light from the lower edge of the wall with no visible dark zones. Because light is precisely focused towards the surface, light pollution is virtually eliminated
dimming options	Push button, potentiometer, 0-10V, DALI, DMX, KNX. Dimming options depend on power supply and additional control units to be separately ordered as accessories
listings	CE, ETL listed for wet location



**EXCELLENT VERTICAL UNIFORMITY:**  
 LIGHT IS CONVEYED PRECISELY TOWARDS THE WALL  
 FROM THE LOWER EDGE TO THE UPPER EDGE



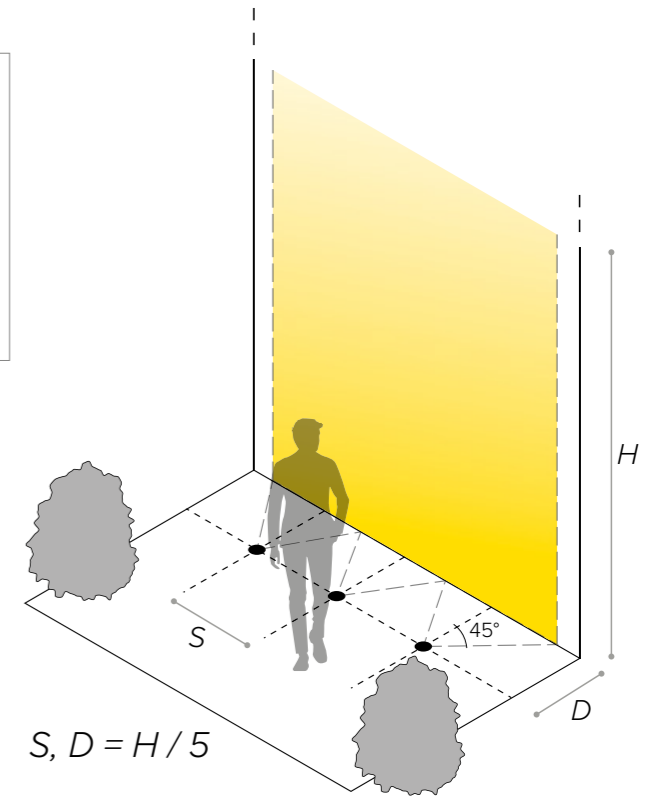
# MEROPE 100 WW

## POSITIONING GUIDE

Because every lighting project is different, use the guide below as a starting point for your lighting design.

To further test the desired effect on your project, use the **photometric files** available on B LIGHT's website.

For good uniformity of light on the wall, **the spacing (S) between two luminaires and the distance from the wall (D) should be the same**

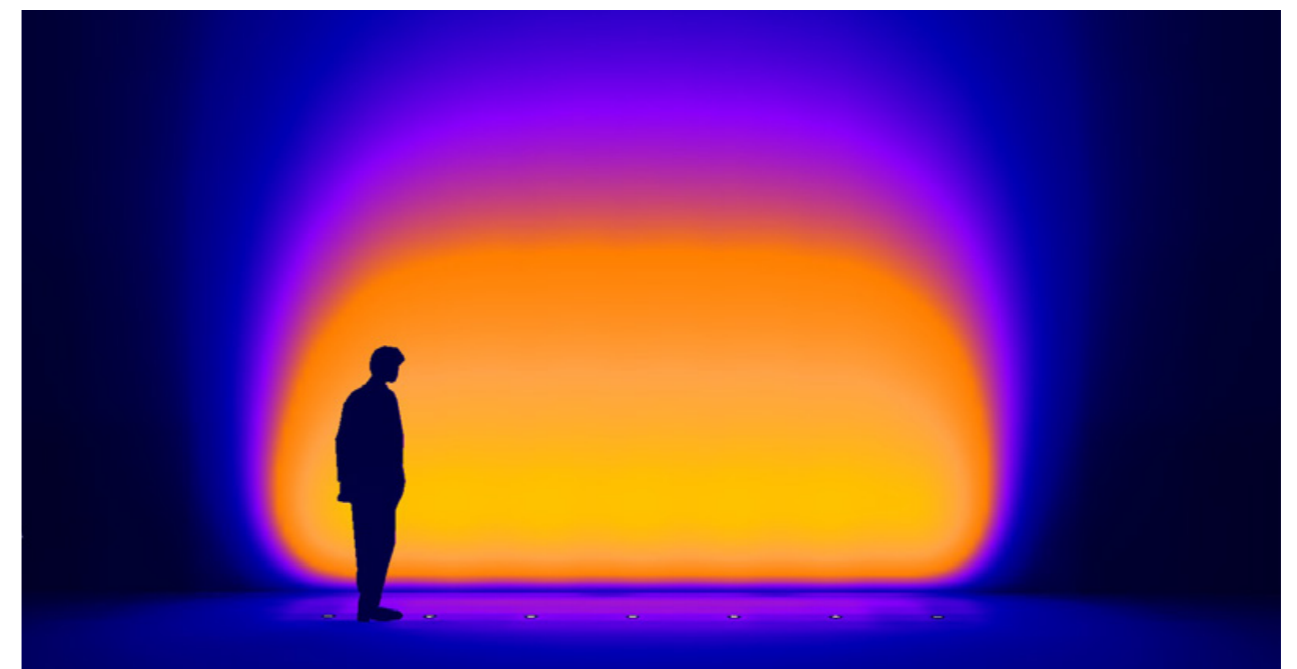


Example

H	2500 mm / 98"	S, D	500 mm / 20"
H	3000 mm / 118"	S, D	600 mm / 24"
H <sub>MAX</sub>	5000 mm / 197"	S, D MAX	1000 mm / 39"



NO VISIBLE DARK ZONES  
AND  
LONGITUDINAL GLARE CONTROL



20lx 50lx 100lx 200lx

# MEROPE 100 WW

## ORDER CODE

**BASE CODE**  
67054

**A . POWER SUPPLY**

- 8** 48V DC EXCL. power supply
- R** listed 24V DC EXCL. power supply

**B . KELVIN**

- 4** 4000K CRI93
- 5** 3000K CRI93
- 8** 2700K CRI93
- I** 2200K CRI80

**C . BEAM**

- W** Wall washer

**D . FINISHES**

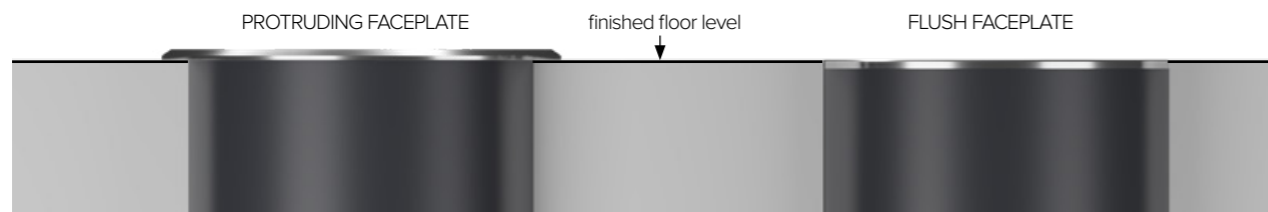
- A** stainless steel flush faceplate
- B** stainless steel protruding faceplate
- S** screws on faceplate
- N** no screws on faceplate<sup>1</sup>

**E . OTHER**

<sup>1</sup> the faceplate can be removed without tools. Don't choose this option when the fixture will be installed in public spaces.  
*Available for North America only*

Example: BASE CODE **67054** A **8** B **8** C **W** D **B** E **S** = **67054-88WBS**

## FACEPLATE OPTIONS



# MEROPE 100 WW

## ACCESSORIES

### REQUIRED ACCESSORIES - NOT INCLUDED

code	description	dimensions mm
69477	housing box for concrete	Ø100xH149
69478	height adjustable housing box for concrete	Ø150xH154-214
69592	suction cup for the extraction of the luminaire	W50xH40

code	output power	input voltage / frequency	IP	dimensions mm
69180	30W	90-264V	47-63Hz	IP20 L160xW46xH30
69185	40W	90-305V	47-63Hz	IP67 L171xW62xH37
69186	60W	90-305V	47-63Hz	IP67 L171xW62xH37
69187	100W	90-305V	47-63Hz	IP67 L220xW68xH39
69195	75W	100-305V	47-63Hz	IP67 L180xW63xH36
69196	100W	100-305V	47-63Hz	IP67 L199xW63xH36
69096	55W	99-264V	50-60Hz	IP20 L129xW76xH30

**Power supply 48V DC ON/OFF\***

**Power supply 48V DC 1-10V<sup>®</sup> or ON/OFF\* for ambient temperature up to 60° C**

**Power supply 48V DC DALI<sup>®</sup> for ambient temperature up to 60° C**

**Power supply 48V DC 1-10V and DALI**

**Class 2 power supply 24V DC**

Consult **B LIGHT North America**  
Lighting Group Network  
T: 212.775.6363  
E: info@lightinggroupnetwork.com

code	description	dimensions mm
69842	IP68 connector, 1 IN - 1 OUT, 2 wires	W37xD22xH37
69847	IP68 connector, 1 IN - 2 OUT, parallel wiring, 2 wires	W45xD30xH17