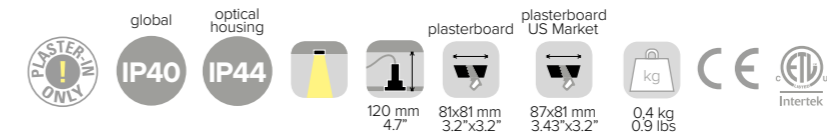
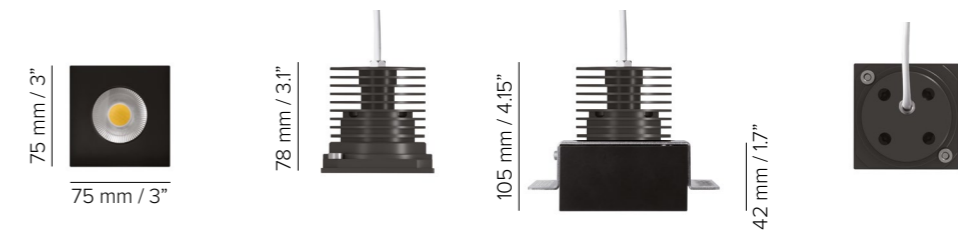
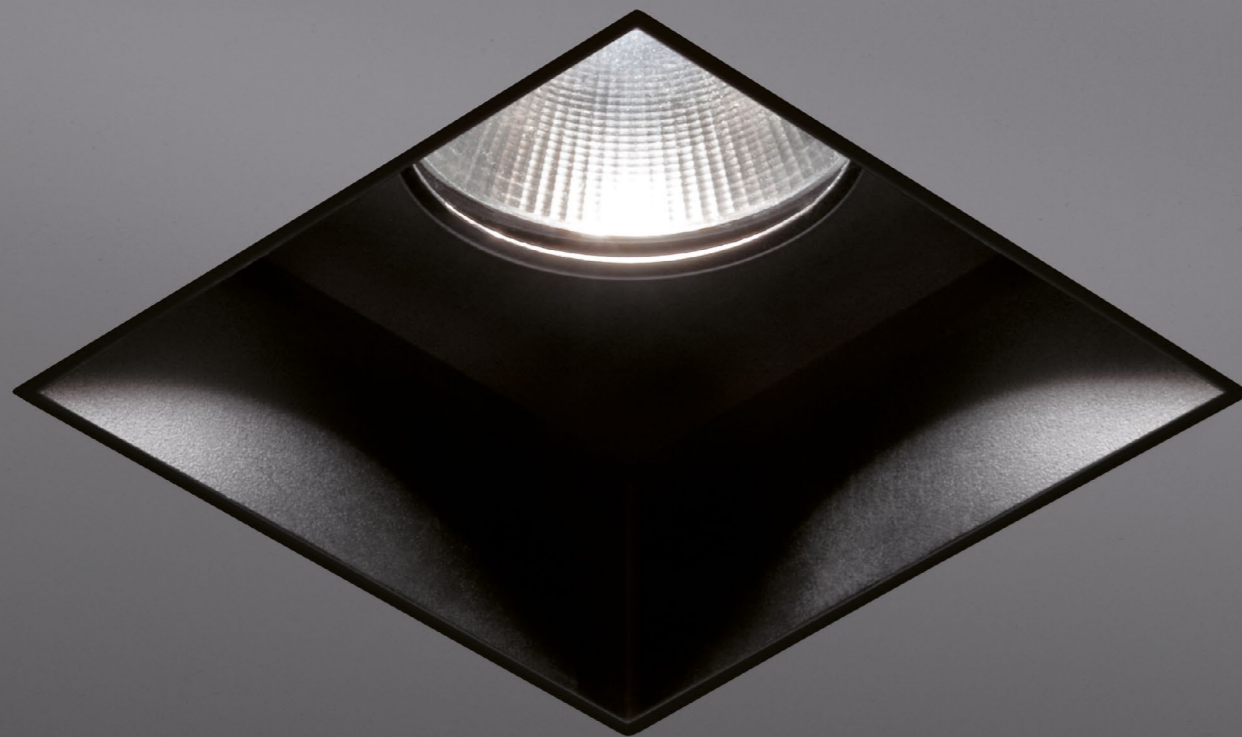


INSIDE 80 SQ

SPECIFICATIONS

base code	64114
typology	Square trimless downlight
mounting	In plasterboard using mounting frame to be separately ordered
dimension	80x80 mm / 3.2"x3.2"
height	78 mm / 3.1", 105 mm / 4.15"
required depth	120 mm / 4.7"
first fit requirement	Yes, separate mounting frame for plaster ceiling. Mounting frame for plasterboard 13 mm / 0.5" (code 69363/69364). Height adjustable mounting frame for plasterboard (code 69383/69384). Mounting frame for plasterboard US market (code 69547/69548)
ceiling cut out	81x81 mm / 3.2"x3.2". US Market: 87x81 mm / 3.43"x3.2"
construction	Fixture: turning and milling aluminum. Reflector and protective glass in polycarbonate. Mounting frame: extruded aluminum and galvanized steel
finishes	Powder coated. Heat sink anodized
ingress protection	Global IP40, optical housing IP44. North America: damp location
lamp type	COB. Remote power supply not included
lamp wattage	12W at 24V DC and 350 mA. North America: 12W at 350 mA
delivered lumens	990lm (3000K CRI93, 38°)
lumen maintenance	50.000h L90
beam	28°, 38°, 50° with softening lens
kelvin	2700K CRI93, 3000K CRI93 and 4000K CRI93 / 3 step MacAdam ellipse
special features	Two Wires Dimming. 24V DC: Reverse Polarity Protection. Thermal Sensor. Safe Wiring
control protocols	0-10V, DMX or DALI
certifications	CE, ETL listed (certified to UL 2108, CSA C22.2)




INSIDE 80 SQ

ORDER CODE

BASE CODE

64114


A . POWER SUPPLY

- 2** 24V DC power supply NOT included
- L** 350 mA power supply NOT included
- U**  listed 350 mA power supply NOT included

B . KELVIN

- 4** 4000K CRI93
- 5** 3000K CRI93
- 8** 2700K CRI93

C . BEAM

- F** spot 28°, soft lens
- G** flood 38°, soft lens 
- H** wide flood 50°, soft lens

BASE CODE A B C D

Example: **64114 2 8 F 6 = 64114-28F6**

D . FINISHES

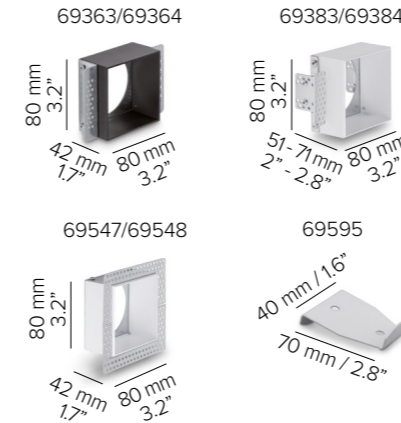
- 2** black RAL 9005 
- 6** white RAL 9003 



INSIDE 80 SQ

ACCESSORIES

REQUIRED ACCESSORIES - NOT INCLUDED



code	description	dimensions mm
69363	white mounting frame for plasterboard 13 mm / 0.5"	W80x80xH42
69364	black mounting frame for plasterboard 13 mm / 0.5"	W80x80xH42
69383	height adjustable white mounting frame for plasterboard from 10 to 30 mm / from 0.4" to 1.2"	W80x80xH51-71
69384	height adjustable black mounting frame for plasterboard from 10 to 30 mm / from 0.4" to 1.2"	W80x80xH51-71
69547	white mounting frame for plasterboard US market	W80x80xH42
69548	black mounting frame for plasterboard US market	W80x80xH42
69595	key for extraction of the luminaire from the mounting frame	W70xD40

Power supply
24V DC*, ON/OFF
ambient temperature up to 60° C

code	output power	input voltage / frequency	IP	dimensions mm	through cut out
69061	40W	90-305V	47-63Hz	IP67	L171xW62xH37 YES
69062	60W	90-305V	50-60Hz	IP67	L171xW62xH37 YES
69063	100W	90-305V	50-60Hz	IP67	L220xW68xH39 YES
69220	120W	90-305V	47-63Hz	IP65	L191xW63xH38 YES
69215	60W	90-305V	47-63Hz	IP65	L150xW53xH35 YES
69086	ON/OFF, 15W / max 1	90-264V	50-60Hz	IP20	L115xW34xH19 YES
69090	1-10V, 18W / max 1	99-264V	50-60Hz	IP20	L120xW52xH22 YES
69079	DALI, 15W / max 1	110-240V	50-60Hz	IP20	L120xW52xH22 YES

Class 2 power supply
350 mA
 listed

Consult **B LIGHT North America**
Lighting Group Network
T: 212.775.6363
E: info@lightinggroupnetwork.com

*To choose the power supply, always add a spare 20% as safety margin.
See pag 519 for cable size and max wiring distance from power supply to last connected luminaire