

# INSIDE 75 R

## SPECIFICATIONS



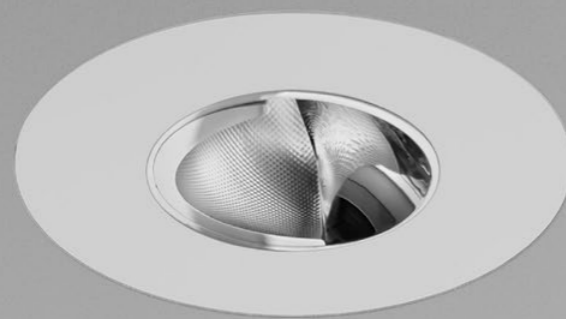
|                       |   |
|-----------------------|---|
| base code             | 64144   |
| typology              | Glare free trimless downlight with symmetrical or wallwasher light distribution   |
| mounting              | In plasterboard or millwork using mounting frame to be separately ordered   |
| aperture              | 75 mm / 3"  |
| height                | Fixed: 105 mm / 4.1". Wallwasher: 78 mm / 3.1"  |
| required depth        | Fixed: 120 mm / 4.7". Wallwasher: 100 mm / 3.9"   |
| first fit requirement | Yes, separate mounting frame. Mounting frame for plasterboard 13 mm / 0.5" (code 69372).<br>Mounting frame for plasterboard US market (code 69541).<br>Mounting frame for millwork (code 69388)   |
| ceiling cut out       | Plasterboard: 80 mm / 3.15" (US Market: 90 mm / 3.54"). Millwork: 75 mm / 2.95"   |
| construction          | Fixture and mounting frame: turning and milling aluminum.<br>Reflector: polycarbonate. Protective glass in PMMA or softening glass  |
| finishes              | Powder or ceramic coated. Heat sink anodized  |
| ingress protection    | IP30, IP44 or IP66. North America: dry, damp or wet location  |
| lamp type             | COB. Remote power supply not included   |
| lamp wattage          | 10W at 24V DC and 500mA. For Yacht operating voltage 20V-30V. <b>Vf 17,8V DC.</b><br>Tunable white: max 10W at 500 mA (CH1 + CH2 max 10W, one channel max 10W). <b>Vf 17,8V DC.</b><br>Dim to warm: 10W at 280 mA. <b>Vf 34V DC</b>   |
| delivered lumens      | IP30: 850lm (30°) - 930lm (50°) - 970lm (70°) - 790lm (wallwasher)<br>IP44 / IP66: 760lm (30°) - 840lm (50°) - 870lm (70°) - 710lm (wallwasher)   |
| lumen maintenance     | 50.000h L90   |
| beam                  | 30°, 50°, 70° or <b>wallwasher (downlight 25° and wallwasher)</b>   |
| kelvin                | 2700K CRI93, 3000K CRI93, 4000K CRI93 / 3 step MacAdam ellipse,<br>tunable white 1800K - 4000K CRI93, or dim to warm 1800K - 3000K CRI93  |
| special features      | Safe Wiring. Two Wires Dimming. Designed to deliver glare free homogeneous light.<br>UGR<10 (30°), UGR<19 (50°), UGR<25 (70°).<br>The wallwasher offers longitudinal cut-off and delivers homogeneous light from the upper edge of the wall to the floor with no visible dark zones |
| control protocols     | 0-10V, DMX or DALI  |
| certifications        | CE, ETL listed (certified to UL 2108, CSA C22.2)  |



30°, 50°, 70° BEAM



WALLWASHER

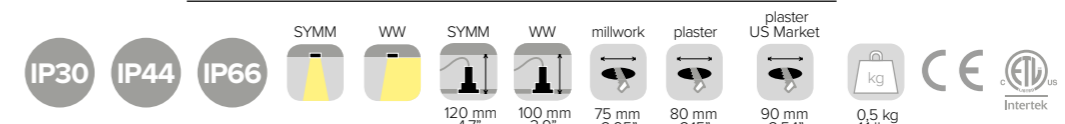
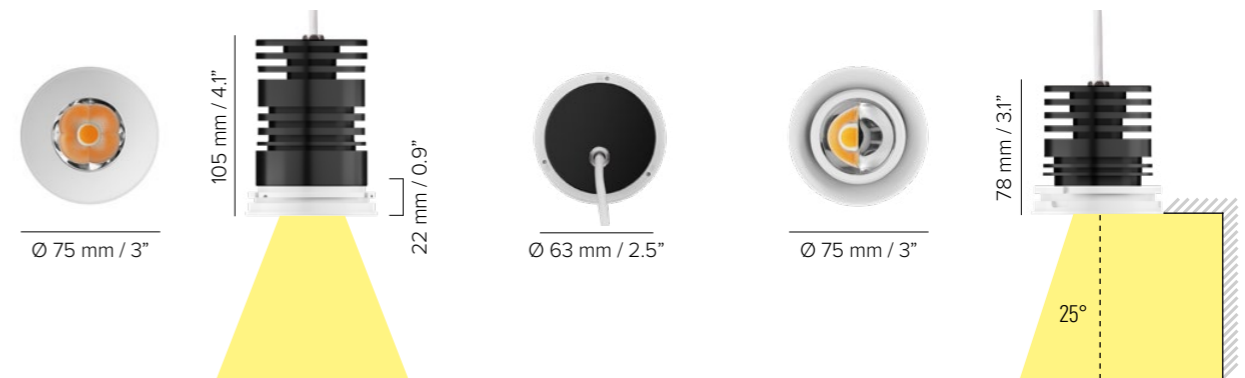


WALLWASHER  
NORTH AMERICA



30°, 50°, 70° BEAM

WALLWASHER



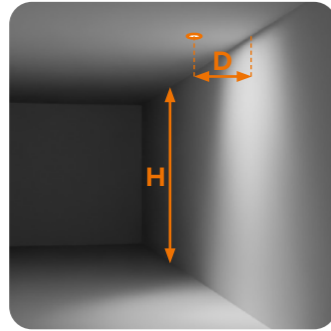
# INSIDE 75 R

## INSTALLATION GUIDE FOR WALLWASHER

FOR A GOOD UNIFORMITY OF LIGHT ON THE WALL, FOLLOW THESE RULES:

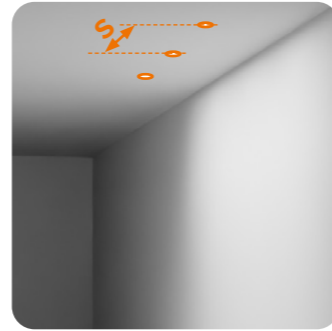
1

The **distance from the wall D** shall be minimum  $H / 5$  and maximum  $H / 3$



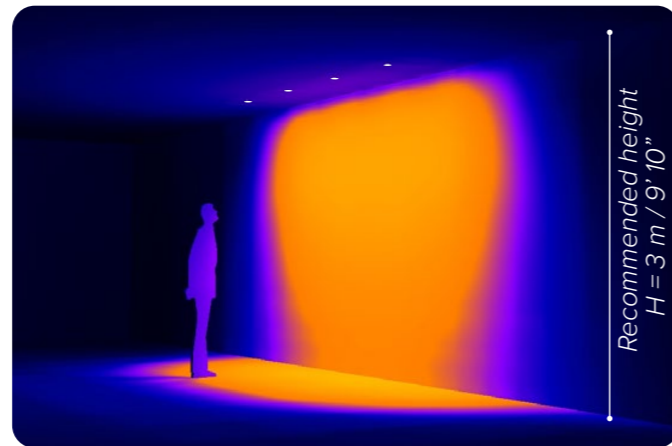
2

The **spacing between luminaires S** shall be minimum the distance **D** from the wall and maximum twice the distance **D x 2** from the wall



**INSIDE 75 R**  
10W, 790lm delivered

|                 |                                  |                                  |
|-----------------|----------------------------------|----------------------------------|
| H 3 m<br>9' 10" | D <sub>MIN</sub> 0,6 m<br>1' 11" | S <sub>MIN</sub> 0,6 m<br>1' 11" |
|                 |                                  | S <sub>MAX</sub> 1,2 m<br>3' 11" |
|                 | D <sub>MAX</sub> 1 m<br>3' 3"    | S <sub>MIN</sub> 1 m<br>3' 3"    |
|                 |                                  | S <sub>MAX</sub> 2 m<br>6' 7"    |



20lx 50lx 100lx 200lx

# WALLWASHER OPTIONS

FOR DIFFERENT CEILING HEIGHTS



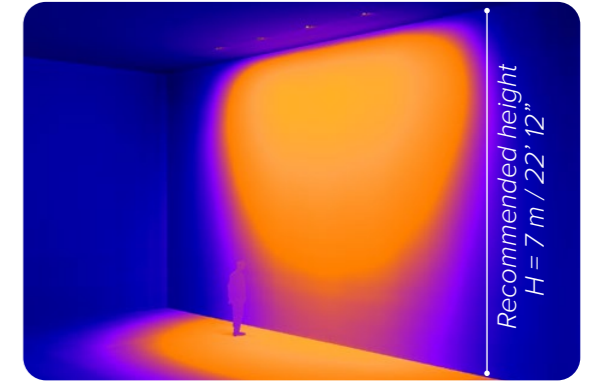
**INSIDE 120 R**  
30W, 2440lm delivered

SEE PAGE 401



**ATRIA X3 R**  
30W, 2440lm delivered

SEE PAGE 473



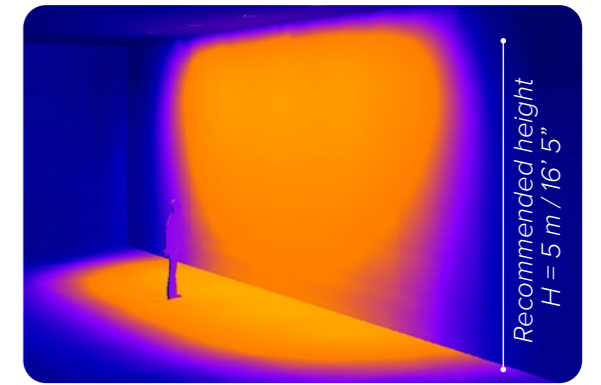
**INSIDE 120 R**  
23W, 2025lm delivered

SEE PAGE 401



**ATRIA X3 R**  
23W, 2025lm delivered

SEE PAGE 473



**INSIDE 60 R**  
6W, 570lm delivered

SEE PAGE 381



**ATRIA 60 P**  
6W, 570lm delivered

SEE PAGE 79



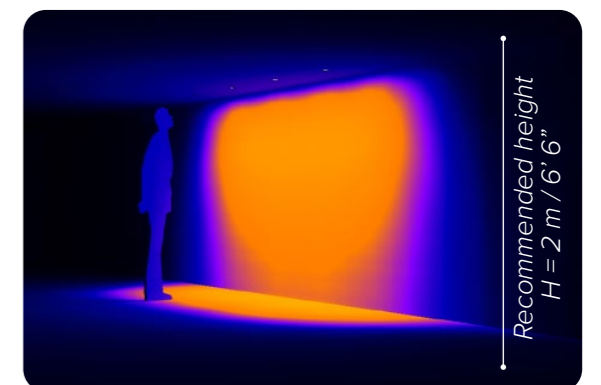
**INSIDE 40 R**  
4W, 220lm delivered

SEE PAGE 373



**DOT 45**  
4W, 220lm delivered

SEE PAGE 437



Since every project is different, use this installation guide as a starting point for your lighting design. To further test the desired effect on your project, use the **photometric files** available on B LIGHT's website.

# INSIDE 75 R

## ORDER CODE

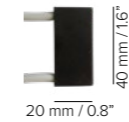


### BASE CODE

64144

### A . POWER SUPPLY

**2** 24V DC (20V - 30V)  
FOR YACHT ONLY  
power supply  
NOT included



**L** 500 mA  
power supply  
NOT included

**U** listed  
500 mA  
power supply  
NOT included

### B . KELVIN

**4** 4000K CRI93

**5** 3000K CRI93

**8** 2700K CRI93

**7** tunable white  
1800K - 4000K CRI93

**H** dim to warm  
1800K - 3000K CRI93

*ONLY WITH SOFTENING  
GLASS AND IP44*

### C . BEAM

**4** spot 30°

**F** spot 30°,  
softening glass

**5** flood 50°

**G** flood 50°,  
softening glass

**8** wide flood 70°

**H** wide flood 70°,  
softening glass

**A** chrome  
wallwasher

**C** black  
wallwasher



BASE CODE

Example: **64144**

A B C D E F

**2 8 A 6 B A = 64144-28A6BA**

### D . FINISHES

**2** black  
RAL 9005



**6** white  
RAL 9003



**L** black  
CERAMIC



**M** gun metal  
CERAMIC



**N** champagne  
CERAMIC



### E . INGRESS PROTECTION

**A** IP30

**B** IP44

**C** IP66

### F . ADJUSTABILITY

**A** fixed



### WALLWASHER BEAM



**A** CHROME WALLWASHER



**C** BLACK WALLWASHER

### WALLWASHER BEAM (NORTH AMERICA)



**A** CHROME WALLWASHER



**C** BLACK WALLWASHER

# INSIDE 75 R

## ACCESSORIES



30° BEAM

### REQUIRED ACCESSORIES - NOT INCLUDED



Power supply  
500 mA  
max No. fixtures

Power supply  
tunable white  
500 mA  
max No. fixtures

Power supply  
dim to warm  
280 mA  
max No. fixtures

Class 2 power supply  
500 mA  
ETL listed

| code  | description  | dimensions mm |
|-------|--|---------------|
| 69372 | mounting frame for plasterboard 13 mm / 0.5"   | Ø80xH13       |
| 69377 | height adjustable mounting frame for plasterboard from 10 to 30 mm / from 0.4" to 1.2" | Ø80xH10-30    |
| 69541 | mounting frame for plasterboard US market  | Ø80xH13       |
| 69388 | mounting frame for millwork from 10 to 30 mm / from 0.4" to 1.2"                       | Ø75xH30       |
| 69592 | suction cup for wallwasher <b>IP44/IP66 US market</b>                                  | W50xH40       |

| code  | output power          | input voltage | frequency | IP   | dimensions mm | through frame |
|-------|-----------------------|---------------|-----------|------|---------------|---------------|
| 69109 | ON/OFF, 10W / max 1   | 198-264V      | 50-60Hz   | IP20 | L100xW43XH23  | YES           |
| 69091 | 1-10V, 20W / max 2    | 99-264V       | 50-60Hz   | IP20 | L120xW52XH22  | YES           |
| 69080 | DALI, 20W / max 2     | 220-240V      | 50-60Hz   | IP20 | L120xW52xH22  | YES           |
| 69206 | DALI, 24W / max 2     | 99-264V       | 50-60Hz   | IP67 | L122xW54xH26  | YES           |
| 69119 | DALI DT8, 25W / max 2 | 198-264V      | 50-60Hz   | IP20 | L123xW79XH30  | NO            |
| 69222 | 1-10V, 15W / max 1    | 99-264V       | 50-60Hz   | IP20 | L111xW52XH22  | YES           |
| 69223 | DALI, 10W / max 1     | 220-240V      | 50-60Hz   | IP20 | Ø39xH21       | YES           |

Consult **B LIGHT North America**  
Lighting Group Network  
T: 212.775.6363  
E: info@lightinggroupnetwork.com

| Power supply selection |              |              |
|------------------------|--------------|--------------|
| DC MIN                 | LED          | DC MAX       |
| Output < 17.8V DC      | < Output (V) | < Output (V) |