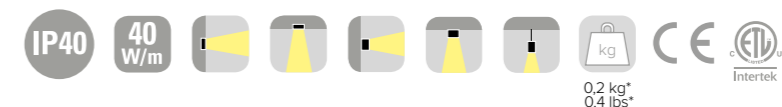
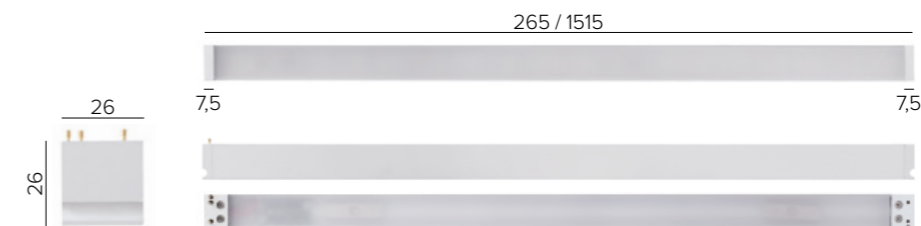




INSERTO SMALL TRACK

SPECIFICATIONS

base code	651
typology	Linear recessed luminaire with symmetrical light distribution
mounting	Into The Magnet Track through a magnetic fixing
length	Available in six lengths, from 265 to 1515 mm / from 10.43" to 59.65"
depth	26 mm / 1.02"
width	26 mm / 1.02"
first fit requirement	Yes, The Magnet Track
construction	Extruded aluminum fixture. End caps in PVC. Diffuser in white polycarbonate
finishes	Powder coated
ingress protection	IP40. North America dry location
lamp type	Linear LED array on printed circuit board. PCB L 250 mm / 9.84". PCB increment 250 mm / 9.84" - 1500 mm / 59.06" max. Custom dimensions on request. Remote power supply not included
LED pitch	4,1 mm / 0.16" (480 LEDs per meter)
lamp wattage	From 10W to 60W at 48V DC
lamp lumens	PCB L 250: 2700K CRI93 - 830lm, 3000K CRI93 - 830lm, 4000K CRI93 - 915lm
delivered lumens	PCB L 250: 590lm (3000K CRI93)
lumen maintenance	50.000h L90
beam	Diffused
kelvin	2700K CRI93, 3000K CRI93 and 4000K CRI93 / 3 step MacAdam ellipse
special features	Unpolarized electronic system. Diffuse and completely homogenous light distribution across the entire surface
dimming options	Push button, potentiometer, 1-10V, DMX, KNX. DALI on/off only. Dimming options depend on power supply and additional control units to be separately ordered as accessories
listings	CE, ETL listed for dry location




* weight based on 250 mm / 9.84"



INSERTO SMALL TRACK

ORDER CODE

BASE CODE	A1 . LENGTH	A . POWER SUPPLY	B . KELVIN
651	01 265 mm 10 W 02 515 mm 20 W 03 765 mm 30 W 04 1015 mm 40 W 05 1265 mm 50 W 06 1515 mm 60 W	8 48V DC EXCL. power supply S  listed 48V DC EXCL. power supply	4 4000K CRI93 5 3000K CRI93 8 2700K CRI93

Example: BASE CODE A1 A B C D = **651 01 8 5 A 6** = **65952-85A6**

C . DIFFUSER

A satin
flush diffuser

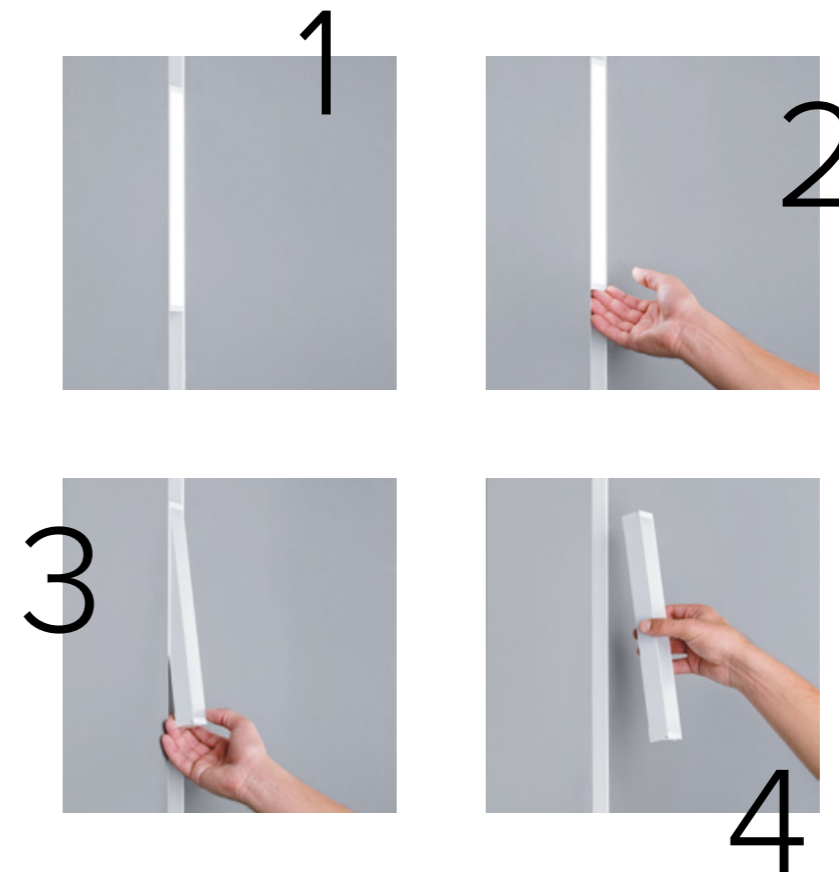


D . FINISHES

2 black
RAL 9005



6 white
RAL 9003



INSERTO SMALL TRACK

ACCESSORIES

REQUIRED ACCESSORIES - NOT INCLUDED

The Magnet Track See page 315 for more info

code	page	description	dimensions mm
696	317	The Magnet Track F flush with the ceiling	W30xH50
696	319	The Magnet Track CL surface mounted	W30xH50
696	321	The Magnet Track SD pendant suspended	W30xH50

Power supply 48V DC* ON/OFF

code	output power	input voltage / frequency	IP	dimensions mm
69180	30W	90-264V 47-63Hz	IP20	L160xW46xH30
69181	40W	90-305V 47-63Hz	IP67	L163xW43xH32
69182	60W	90-305V 47-63Hz	IP67	L163xW43xH32
69183	100W	90-264V 47-63Hz	IP20	L201xW70xH35
69188	150W	90-305V 47-63Hz	IP67	L228xW68xH39
69189	240W	90-305V 47-63Hz	IP67	L244xW68xH39

Power supply 48V DC* DALI®

69195	75W	100-305V 47-63Hz	IP67	L180xW63xH36
69196	100W	100-305V 47-63Hz	IP67	L199xW63xH36
69197	150W	100-305V 47-63Hz	IP67	L219xW63xH36

* on / off only

Class 2 power supply 48V DC

Consult **B LIGHT North America**
Lighting Group Network
T: 212.775.6363
E: info@lightinggroupnetwork.com

OPTIONAL ACCESSORIES

69659/69660



Control unit 48V DC Dimmer interface 0-10V interface

code	page	description	input voltage	IP	dimensions mm
69659	566	KIT DIMMER MASTER Dimmer interface master (two channels max 240W and No. 32 KIT DIMMER SLAVE) or 0-10V interface (one channel max 240W and No. 32 KIT DIMMER SLAVE, active signal is required)	48V DC	IP20	W58xD35xH16 W49xD25xH21



Control unit 48V DC DMX interface

69660	566	KIT DIMMER SLAVE DMX interface or dimmer interface slave (two channels max 240W)	48V DC	IP20	W58xD35xH16 W49xD25xH21
-------	-----	--	--------	------	----------------------------

*To choose the power supply, always add a spare 20% as safety margin.
See pag 587 for cable size and max wiring distance from power supply to last connected luminaire