

INSERTO MEDIUM 65 T

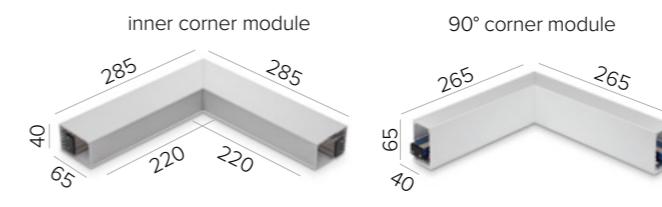
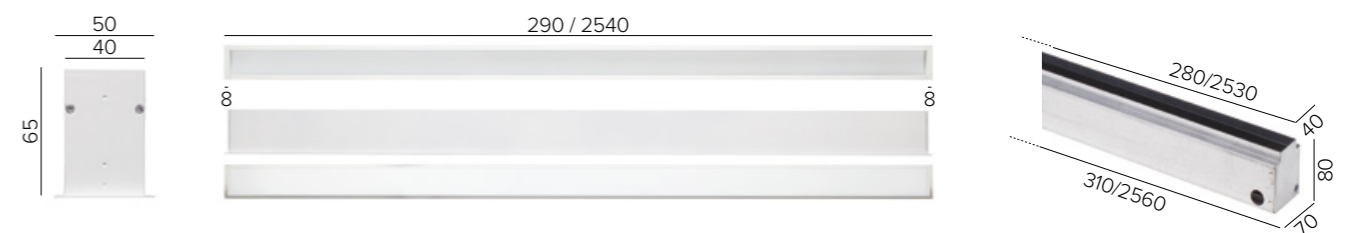
INSERTO MEDIUM 65 T SYSTEM

SPECIFICATIONS

base code	658
typology	Trimmed, linear recessed luminaire with symmetrical light distribution
mounting	In plasterboard using brackets (included) or in concrete using housing box (code from 69451 to 69460) to be separately ordered as accessory
length	See next page for complete data
depth	65 mm / 2.56"
width	50 mm / 1.97"
required depth	80 mm / 3.14"
first fit requirement	Yes, housing box to be separately ordered if mounting in concrete
ceiling cut out	Plasterboard: 44 mm / 1.73" - Concrete: 70x80 mm / 2.76"x3.15"
ceiling thickness	From 13 to 25 mm MAX / from 0.51" to 0.98" MAX for plaster ceiling
construction	Extruded aluminum fixture. End caps in turning and milling aluminum. Diffuser in polycarbonate. Housing box in zinc-plated iron
finishes	Anodized or powder coated when painted
ingress protection	IP40. North America dry location
lamp type	Linear LED array on printed circuit board. PCB L 250 mm / 9.84". PCB increment 250 mm / 9.84" - 2500 mm / 98.43" max. Custom dimensions on request. Remote power supply not included
LED pitch	4,1 mm / 0.16" (480 LEDs per meter)
lamp wattage	From 3W to 100W at 48V DC (RGB at 24V DC). North America 24V DC
lamp lumens	PCB L 250: 825lm
delivered lumens	PCB L 250: 470lm (3000K CRI93, satin) - 655lm (3000K CRI93, microprismatic)
lumen maintenance	50.000h L90
beam	Diffused or microprismatic
kelvin	2700K CRI93, 3000K CRI93, 4000K CRI93 and RGB / 3 step MacAdam ellipse
special features	Unpolarized electronic system (reverse polarity protection for RGB) - Two wires dimming. Trimless profile that has a knife edge to the finished surface. Diffuse and completely homogenous light distribution across the entire surface.
dimming options	Push button, potentiometer, remote control, 1-10V, DALI, DMX, KNX. Dimming options depend on power supply and additional control units to be separately ordered as accessories
listings	CE, ETL listed for dry location



SATIN RECESSED DIFFUSER



HOUSING BOX NOT AVAILABLE FOR SYSTEM INSTALLATION



* weight based on 250 mm / 9.84"

INSERTO MEDIUM 65 T

ORDER CODE

BASE CODE	A1 . LENGTH			A . POWER SUPPLY		B . KELVIN		
		white	RGB					
658	51	290 mm	10 W	3 W	8	48V DC EXCL. power supply	4	4000K CRI93
	52	540 mm	20 W	6 W	2	24V DC EXCL. power supply RGB only	5	3000K CRI93
	53	790 mm	30 W	9 W	R	ETL listed 24V DC EXCL. power supply	6	RGB ¹
	54	1040 mm	40 W	12 W			8	2700K CRI93
	55	1290 mm	50 W	15 W				
	56	1540 mm	60 W	18 W				
	57	1790 mm	70 W	21 W				
	58	2040 mm	80 W	24 W				
	59	2290 mm	90 W	27 W				
	60	2540 mm	100 W	30 W				

Example: BASE CODE **658** A1 **52** A **8** B **5** C **A** D **6** = **64652-85A6**

C . DIFFUSER

A satin flush diffuser



C satin recessed diffuser



B microprismatic flush diffuser



D microprismatic recessed diffuser



D . FINISHES

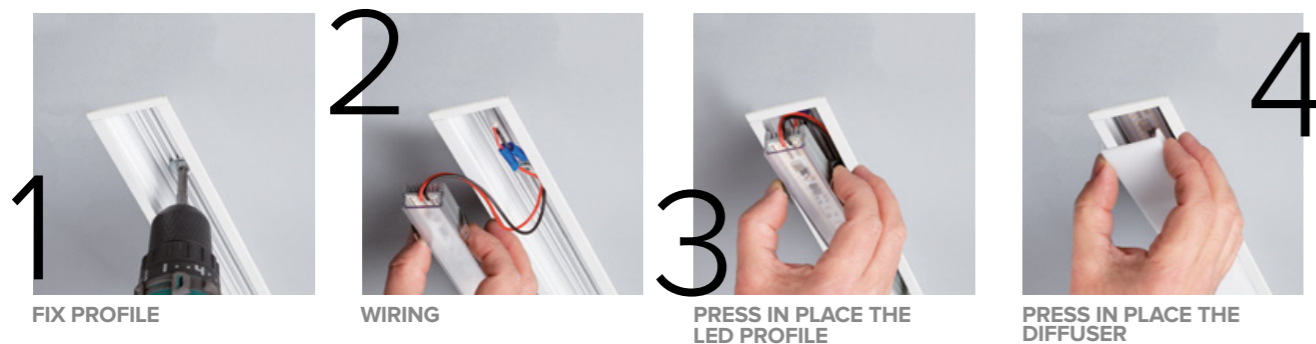
1 grey anodized



6 white RAL 9003



MOUNTING: TWO PROFILES IN ONE FIXTURE FOR EASY FUTURE RE-LAMPING



INSERTO MEDIUM 65 T SYSTEM

ORDER CODE

BASE CODE	A1 . LENGTH			A . POWER SUPPLY		B . KELVIN		
		white	RGB					
658	starting inserto¹			8	48V DC EXCL. power supply	4	4000K CRI93	
	64	532 mm	20 W	6 W	2	24V DC EXCL. power supply RGB only	5	3000K CRI93
	65	782 mm	30 W	9 W	R	ETL listed 24V DC EXCL. power supply	6	RGB ³
	66	1032 mm	40 W	12 W			8	2700K CRI93
	67	1282 mm	50 W	15 W				
	68	1532 mm	60 W	18 W				
	69	1782 mm	70 W	21 W				
	70	2032 mm	80 W	24 W				
	71	2282 mm	90 W	27 W				
	72	2532 mm	100 W	30 W				
	middle inserto²							
	76	505 mm	20 W	6 W				
	77	755 mm	30 W	9 W				
	78	1005 mm	40 W	12 W				
	79	1255 mm	50 W	15 W				
	80	1505 mm	60 W	18 W				
	81	1755 mm	70 W	21 W				
	82	2005 mm	80 W	24 W				
	83	2255 mm	90 W	27 W				
	84	2505 mm	100 W	30 W				
	inner corner module²							
	89	285x285 mm	20 W	6 W				
90° corner module²								
90	265x265 mm	20 W	6 W					

Example: BASE CODE **658** A1 **64** A **8** B **5** C **A** D **6** = **65864-85A6**

C . DIFFUSER

A satin flush diffuser



C satin recessed diffuser



B microprismatic flush diffuser



D microprismatic recessed diffuser



D . FINISHES

1 grey anodized



6 white RAL 9003

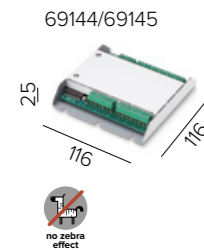


INSERTO MEDIUM 65 T INSERTO MEDIUM 65 T SYSTEM

ACCESSORIES

REQUIRED ACCESSORIES - NOT INCLUDED

Power supply 48V DC ON/OFF*	code	output power	input voltage / frequency	IP	dimensions mm	
	69180	30W	90-264V	47-63Hz	IP20	L160xW46xH30
	69181	40W	90-305V	47-63Hz	IP67	L163xW43xH32
	69182	60W	90-305V	47-63Hz	IP67	L163xW43xH32
	69183	100W	90-264V	47-63Hz	IP20	L201xW70xH35
	69188	150W	90-305V	47-63Hz	IP67	L228xW68xH39
	69189	240W	90-305V	47-63Hz	IP67	L244xW68xH39
Power supply 48V DC 1-10V ⁽¹⁾	69185	40W	90-305V	47-63Hz	IP67	L171xW62xH37
	69186	60W	90-305V	47-63Hz	IP67	L171xW62xH37
	69187	100W	90-305V	47-63Hz	IP67	L220xW68xH39
	69188	150W	90-305V	47-63Hz	IP67	L228xW68xH39
	69189	240W	90-305V	47-63Hz	IP67	L244xW68xH39
Power supply 48V DC DALI ⁽¹⁾	69195	75W	100-305V	47-63Hz	IP67	L180xW63xH36
	69196	100W	100-305V	47-63Hz	IP67	L199xW63xH36
	69197	150W	100-305V	47-63Hz	IP67	L219xW63xH36
¹ for a perfect dimming, it is necessary that the power supply is saturated to 100%						
Power supply 48V DC 1-10V and DALI	69096	55W	99-264V	50-60Hz	IP20	L129xW76xH30
	69097	120W	90-305V	47-63Hz	IP67	L191xW63xH38
Power supply 48V DC 0-10V	Consult B LIGHT North America Lighting Group Network T: 212.775.6363 E: info@lightinggroupnetwork.com					



Control unit 24V DC - 48V DC RGB interface ⁽²⁾	code	page	description	in/out voltage	IP	dimensions mm
	69144	582	SMART RGB MASTER 2 RGB interface master (max load 240W at 24V DC or 320W at 48V DC and No. 32 SMART RGB SLAVE 2)	24V DC - 48V DC	IP20	W116xD116xH25
	69145	582	SMART RGB SLAVE 2 DMX interface or RGB interface slave (max load 240W at 24V DC or 320W at 48V DC)	24V DC - 48V DC	IP20	W116xD116xH25
² Inserto Medium 65 T System RGB works only with B LIGHT's RGB interface. It is not possible to order the luminaire separately from the RGB interface						
Power supply 24V DC for RGB ON/OFF*	code	output power	input voltage / frequency	IP	dimensions mm	
	69054	60W	90-305V	50-60Hz	IP67	L160xW40xH32
	69052	100W	90-264V	50-60Hz	IP20	L200xW69xH35
	69051	240W	90-305V	50-60Hz	IP65	L244xW68xH39

INSERTO MEDIUM 65 T INSERTO MEDIUM 65 T SYSTEM

ACCESSORIES

OPTIONAL ACCESSORIES

code	description	dimensions mm
69451 / 69460	Housing box for concrete Non available for system installation	
69451	housing box	L310xW70xD80
69452	housing box	L560xW70xD80
69453	housing box	L810xW70xD80
69454	housing box	L1060xW70xD80
69455	housing box	L1310xW70xD80
69456	housing box	L1560xW70xD80
69457	housing box	L1810xW70xD80
69458	housing box	L2060xW70xD80
69459	housing box	L2310xW70xD80
69460	housing box	L2560xW70xD80
69161	RGB remote control	W85xD50xH7





INSERTO MEDIUM 65 T SYSTEM

INSERTO MEDIUM 65 T SYSTEM - WALL / CEILING MOUNTING
 WALL = L 1752 mm / CEILING = L 3507 mm

