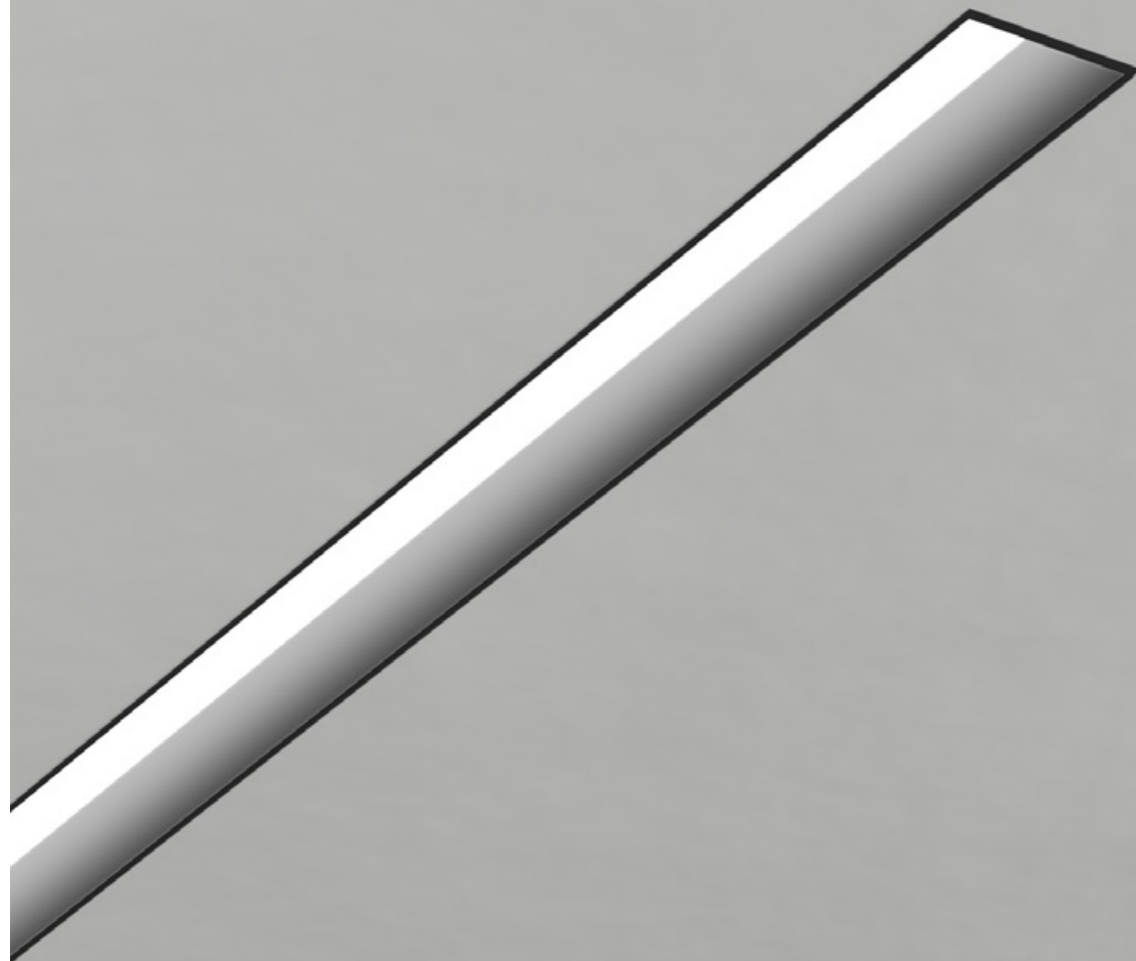


INSERTO MEDIUM 65 F

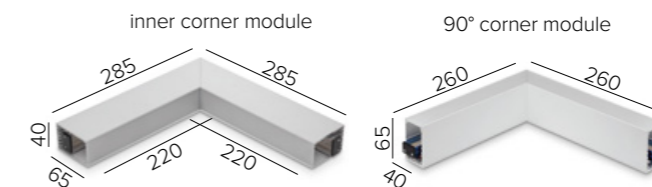
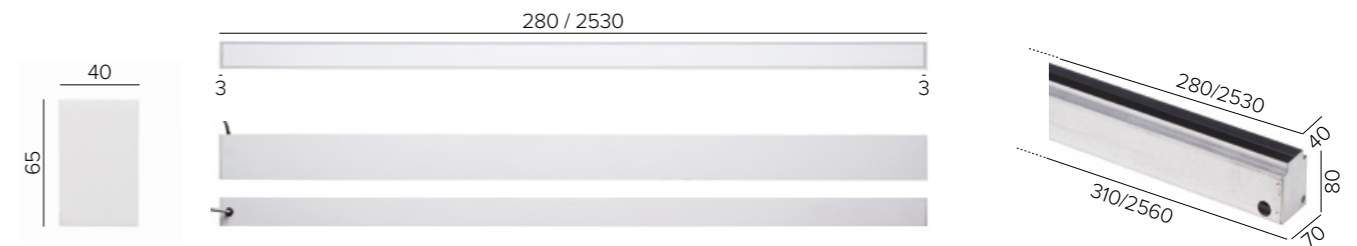
INSERTO MEDIUM 65 F SYSTEM

SPECIFICATIONS

base code	659
typology	Trimless, linear recessed luminaire with symmetrical light distribution
mounting	In plasterboard using brackets (included) or in concrete using housing box (code from 69451 to 69460) to be separately ordered as accessory
length	See next page for complete data
depth	65 mm / 2.56"
width	40 mm / 1.57"
required depth	95 mm / 3.74"
first fit requirement	Yes, housing box to be separately ordered if mounting in concrete
ceiling cut out	Plasterboard: 44 mm / 1.73" - Concrete: 70x80 mm / 2.76"x3.15"
ceiling thickness	From 10 to 15 mm MAX / from 0.39" to 0.59" MAX for plaster ceiling
construction	Extruded aluminum fixture. End caps in turning and milling aluminum. Diffuser in polycarbonate. Housing box in zinc-plated iron
finishes	Anodized or powder coated when painted
ingress protection	IP40. North America dry location
lamp type	Linear LED array on printed circuit board. PCB L 250 mm / 9.84". PCB increment 250 mm / 9.84" - 2500 mm / 98.43" max.
LED pitch	Custom dimensions on request. Remote power supply not included 4,1 mm / 0.16" (480 LEDs per meter)
lamp wattage	From 3W to 100W at 48V DC (RGB at 24V DC). North America 24V DC
lamp lumens	PCB L 250: 825lm
delivered lumens	PCB L 250: 470lm (3000K CRI93, satin) - 655lm (3000K CRI93, microprismatic)
lumen maintenance	50.000h L90
beam	Diffused or microprismatic
kelvin	2700K CRI93, 3000K CRI93 and 4000K CRI93 / 3 step MacAdam ellipse
special features	Unpolarized electronic system (reverse polarity protection for RGB) - Two wires dimming. Trimless profile that has a knife edge to the finished surface. Diffuse and completely homogenous light distribution across the entire surface.
dimming options	Push button, potentiometer, remote control, 1-10V, DALI, DMX, KNX. Dimming options depend on power supply and additional control units to be separately ordered as accessories
listings	CE, ETL listed for dry location



SATIN RECESSED DIFFUSER



HOUSING BOX NOT AVAILABLE FOR SYSTEM INSTALLATION



* weight based on 250 mm / 9.84"

INSERTO MEDIUM 65 F

ORDER CODE

BASE CODE	A1 . LENGTH			A . POWER SUPPLY		B . KELVIN	
659	51	280 mm	10 W	8	48V DC EXCL. power supply	4	4000K CRI93
	52	530 mm	20 W	2	24V DC EXCL. power supply RGB only	5	3000K CRI93
	53	780 mm	30 W	R	Ⓢ listed 24V DC EXCL. power supply	6	RGB ¹
	54	1030 mm	40 W			8	2700K CRI93
	55	1280 mm	50 W				¹ Flush diffuser in satin white only
	56	1530 mm	60 W				
	57	1780 mm	70 W				
	58	2030 mm	80 W				
	59	2280 mm	90 W				
	60	2530 mm	100 W				

Example: BASE CODE **659** A1 **52** A **8** B **5** C **A** D **6** = **65952-85A6**

C . DIFFUSER		D . FINISHES	
A	satin flush diffuser	C	satin recessed diffuser
B	microprismatic flush diffuser	D	microprismatic recessed diffuser
		6	white RAL 9003
		D	black anodized

INSERTO MEDIUM 65 F SYSTEM

ORDER CODE

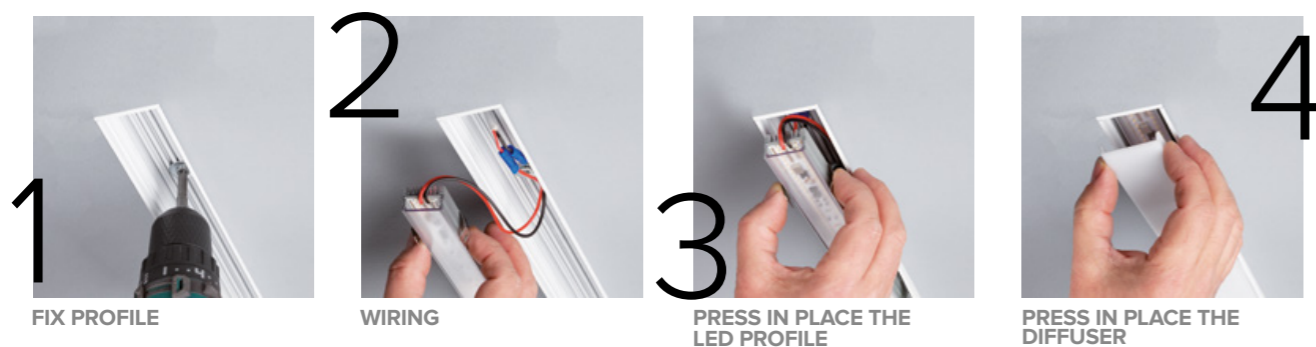
BASE CODE	A1 . LENGTH			A . POWER SUPPLY		B . KELVIN	
659	starting inserto¹						
	64	527 mm	20 W	8	48V DC EXCL. power supply	4	4000K CRI93
	65	777 mm	30 W	2	24V DC EXCL. power supply RGB only	5	3000K CRI93
	66	1027 mm	40 W	R	Ⓢ listed 24V DC EXCL. power supply	6	RGB ³
	67	1277 mm	50 W			8	2700K CRI93
	68	1527 mm	60 W				
	69	1777 mm	70 W				
	70	2027 mm	80 W				
	71	2277 mm	90 W				
	72	2527 mm	100 W				
	middle inserto²						
	76	505 mm	20 W	8	48V DC EXCL. power supply	4	4000K CRI93
	77	755 mm	30 W	2	24V DC EXCL. power supply RGB only	5	3000K CRI93
	78	1005 mm	40 W	R	Ⓢ listed 24V DC EXCL. power supply	6	RGB ³
	79	1255 mm	50 W			8	2700K CRI93
	80	1505 mm	60 W				
	81	1755 mm	70 W				
	82	2005 mm	80 W				
	83	2255 mm	90 W				
	84	2505 mm	100 W				
	inner corner module²						
	89	285x285 mm	20 W	8	48V DC EXCL. power supply	4	4000K CRI93
	90° corner module²						
	90	260x260 mm	20 W	2	24V DC EXCL. power supply RGB only	5	3000K CRI93

Example: BASE CODE **659** A1 **64** A **8** B **5** C **A** D **6** = **65964-85A6**

¹ one end cap only
² no end caps
³ flush diffuser in satin white only

C . DIFFUSER		D . FINISHES	
A	satin flush diffuser	C	satin recessed diffuser
B	microprismatic flush diffuser	D	microprismatic recessed diffuser
		6	white RAL 9003
		D	black anodized

MOUNTING: TWO PROFILES IN ONE FIXTURE FOR EASY FUTURE RE-LAMPING

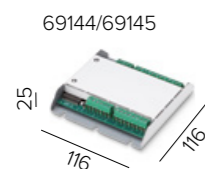


INSERTO MEDIUM 65 F INSERTO MEDIUM 65 F SYSTEM

ACCESSORIES

REQUIRED ACCESSORIES - NOT INCLUDED

	code	output power	input voltage / frequency	IP	dimensions mm	
Power supply 48V DC ON/OFF*	69180	30W	90-264V	47-63Hz IP20	L160xW46xH30	
	69181	40W	90-305V	47-63Hz IP67	L163xW43xH32	
	69182	60W	90-305V	47-63Hz IP67	L163xW43xH32	
	69183	100W	90-264V	47-63Hz IP20	L201xW70xH35	
	69188	150W	90-305V	47-63Hz IP67	L228xW68xH39	
	69189	240W	90-305V	47-63Hz IP67	L244xW68xH39	
Power supply 48V DC 1-10V ⁽¹⁾	69185	40W	90-305V	47-63Hz IP67	L171xW62xH37	
	69186	60W	90-305V	47-63Hz IP67	L171xW62xH37	
	69187	100W	90-305V	47-63Hz IP67	L220xW68xH39	
	69188	150W	90-305V	47-63Hz IP67	L228xW68xH39	
	69189	240W	90-305V	47-63Hz IP67	L244xW68xH39	
Power supply 48V DC DALI ⁽¹⁾	69195	75W	100-305V	47-63Hz IP67	L180xW63xH36	
	69196	100W	100-305V	47-63Hz IP67	L199xW63xH36	
	69197	150W	100-305V	47-63Hz IP67	L219xW63xH36	
¹ for a perfect dimming, it is necessary that the power supply is saturated to 100%						
Power supply 48V DC 1-10V and DALI	69096	55W	99-264V	50-60Hz IP20	L129xW76xH30	
Power supply 48V DC 0-10V	69097	120W	90-305V	47-63Hz IP67	L191xW63xH38	
Class 2 power supply 24V DC	Consult B LIGHT North America Lighting Group Network T: 212.775.6363 E: info@lightinggroupnetwork.com					
Control unit 24V DC - 48V DC RGB interface ⁽²⁾	code	page	description	in/out voltage	IP	dimensions mm
	69144	582	SMART RGB MASTER 2 RGB interface master (max load 240W at 24V DC or 320W at 48V DC and No. 32 SMART RGB SLAVE 2)	24V DC - 48V DC	IP20	W116xD116xH25
Control unit 24V DC - 48V DC DMX RGB interface ⁽²⁾	code	page	description	in/out voltage	IP	dimensions mm
	69145	582	SMART RGB SLAVE 2 DMX interface or RGB interface slave (max load 240W at 24V DC or 320W at 48V DC)	24V DC - 48V DC	IP20	W116xD116xH25
² Inserto Medium 65 F RGB works only with B LIGHT's RGB interface. It is not possible to order the luminaire separately from the RGB interface						
Power supply 24V DC for RGB ON/OFF*	code	output power	input voltage / frequency	IP	dimensions mm	
	69054	60W	90-305V	50-60Hz IP67	L160xW40xH32	
	69052	100W	90-264V	50-60Hz IP20	L200xW69xH35	
69051	240W	90-305V	50-60Hz IP65	L244xW68xH39		



INSERTO MEDIUM 65 F INSERTO MEDIUM 65 F SYSTEM

ACCESSORIES

OPTIONAL ACCESSORIES

code	description	dimensions mm
69451 / 69460	Housing box for concrete Non available for system installation	
69451	housing box	L310xW70xD80
69452	housing box	L560xW70xD80
69453	housing box	L810xW70xD80
69454	housing box	L1060xW70xD80
69455	housing box	L1310xW70xD80
69456	housing box	L1560xW70xD80
69457	housing box	L1810xW70xD80
69458	housing box	L2060xW70xD80
69459	housing box	L2310xW70xD80
69460	housing box	L2560xW70xD80
69161	RGB remote control	W85xD50xH7





INSERTO MEDIUM 65 F SYSTEM

INSERTO MEDIUM 65 F SYSTEM - CEILING MOUNTING
 CEILING = L 2037 x L 2787 mm

