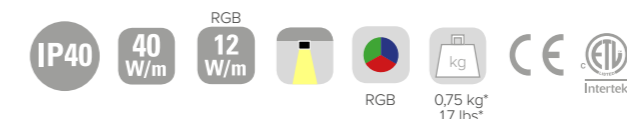


INSERTO MEDIUM 65 CL

SPECIFICATIONS

base code	646
typology	Linear surface luminaire with symmetrical light distribution
mounting	On surface with suitable screws (included)
length	Available in nine lengths, from 530 to 2530 mm / from 20.87" to 99.61"
height	65 mm / 2.56"
width	40 mm / 1.57"
construction	Extruded aluminum fixture. End caps in turning and milling aluminum. Diffuser in polycarbonate
finishes	Anodized or powder coated when painted
ingress protection	IP40
lamp type	Linear LED array on printed circuit board. PCB L 250 mm / 9.84". PCB increment 250 mm / 9.84" - 2500 mm / 98.43" max. Custom dimensions on request. Remote power supply not included
LED pitch	4,1 mm / 0.16" (480 LEDs per meter)
lamp wattage	From 6W to 100W at 48V DC (RGB at 24V DC). North America 24V DC
lamp lumens	PCB L 250: 2700K CRI93 - 826lm, 3000K CRI93 - 826lm, 4000K CRI93 - 915lm
delivered lumens	PCB L 250: 468lm (3000K CRI93, satin) - 654lm (3000K CRI93, microprismatic)
lumen maintenance	50,000h L90
beam	Diffused or microprismatic
kelvin	2700K CRI93, 3000K CRI93, 4000K CRI93 and RGB / 3 step MacAdam ellipse
special features	Diffuse and completely homogenous light distribution across the entire surface. Built-in unpolarized electronic system. RGB: built-in reverse polarity protection
dimming options	Push button, potentiometer, remote control, 1-10V, DALI, DMX, KNX. Dimming options depend on power supply and additional control units to be separately ordered as accessories
standards	CE, UL 2108, CSA C22.2



*weight based on 250 mm / 9.84"

INSERTO MEDIUM 65 CL RGB

INSERTO MEDIUM 65 CL

ORDER CODE





BASE CODE	A1 . LENGTH			A . POWER SUPPLY		B . KELVIN	
646	52	530 mm	20 W	8	48V DC EXCL. power supply	4	4000K CRI93
	53	780 mm	30 W			5	3000K CRI93
	54	1030 mm	40 W			6	RGB ¹
	55	1280 mm	50 W			8	2700K CRI93
	56	1530 mm	60 W				
	57	1780 mm	70 W				
	58	2030 mm	80 W				
	59	2280 mm	90 W				
	60	2530 mm	100 W				

A . POWER SUPPLY		B . KELVIN	
2	24V DC EXCL. power supply RGB only	6	RGB ¹
R	ETL listed 24V DC EXCL. power supply		

¹ flush diffuser in satin white only

Example: BASE CODE **646** A1 **52** A **8** B **5** C **A** D **6** = **64652 25A6**

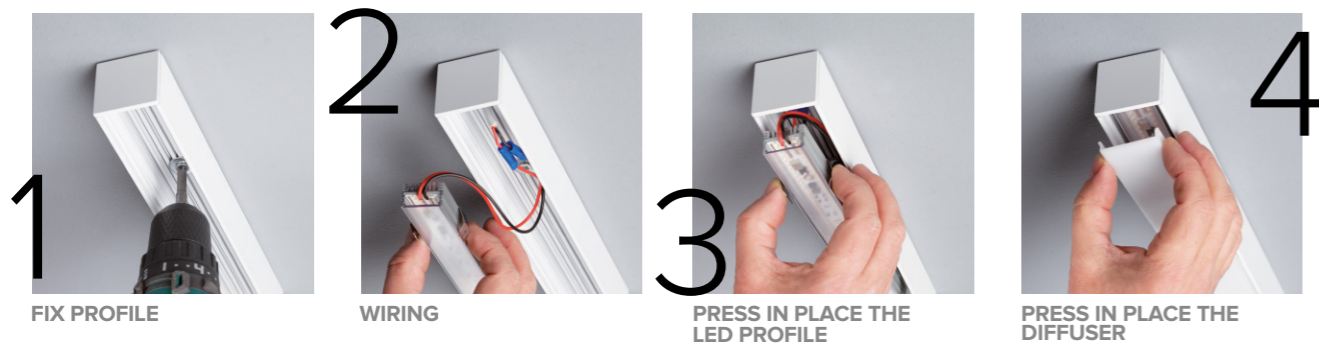
C . DIFFUSER

- A** satin flush diffuser 
- B** microprismatic flush diffuser 
- C** satin recessed diffuser 
- D** microprismatic recessed diffuser 

D . FINISHES

- 1** grey anodized 
- 6** white RAL 9003 
- D** black anodized 

MOUNTING: TWO PROFILES IN ONE FIXTURE FOR EASY FUTURE RE-LAMPING



INSERTO MEDIUM 65 CL

ACCESSORIES

REQUIRED ACCESSORIES - NOT INCLUDED

code	output power	input voltage / frequency	IP	dimensions mm
69180	30W	90-264V	47-63Hz IP20	L160xW46xH30
69181	40W	90-305V	47-63Hz IP67	L163xW43xH32
69182	60W	90-305V	47-63Hz IP67	L163xW43xH32
69183	100W	90-264V	47-63Hz IP20	L201xW70xH35
69188	150W	90-305V	47-63Hz IP67	L228xW68xH39
69189	240W	90-305V	47-63Hz IP67	L244xW68xH39
69190	320W	90-305V	47-63Hz IP67	L252xW90xH44
69185	40W	90-305V	47-63Hz IP67	L171xW62xH37
69186	60W	90-305V	47-63Hz IP67	L171xW62xH37
69187	100W	90-305V	47-63Hz IP67	L220xW68xH39
69188	150W	90-305V	47-63Hz IP67	L228xW68xH39
69189	240W	90-305V	47-63Hz IP67	L244xW68xH39
69190	320W	90-305V	47-63Hz IP67	L252xW90xH44
69195	75W	100-305V	47-63Hz IP67	L180xW63xH36
69196	100W	100-305V	47-63Hz IP67	L199xW63xH36
69197	150W	100-305V	47-63Hz IP67	L219xW63xH36
69096	55W	99-264V	50-60Hz IP20	L129xW76xH30
69097	120W	90-305V	47-63Hz IP67	L191xW63xH38

code	page	description	in/out voltage	IP	dimensions mm
69144	592	SMART RGB MASTER 2 RGB interface master (max load 240W at 24V DC or 320W at 48V DC and No. 32 SMART RGB SLAVE 2)	24V DC - 48V DC	IP20	W116xD116xH25
69145	592	SMART RGB SLAVE 2 DMX interface or RGB interface slave (max load 240W at 24V DC or 320W at 48V DC)	24V DC - 48V DC	IP20	W116xD116xH25
69116	568	SMART DIMM MASTER 4 Dimmer interface master or 0-10V interface (four channels max load 240W at 24V DC or 320W at 48V DC and No. 32 SMART DIMM SLAVE 4)	24V DC - 48V DC	IP20	W116xD116xH25
69117	568	SMART DIMM SLAVE 4 DMX interface or dimmer interface slave (four channels max load 240W at 24V DC or 320W at 48V DC)	24V DC - 48V DC	IP20	W116xD116xH25
69161		RGB remote control			W85xD50xH7

¹ for a perfect dimming, it is necessary that the power supply is saturated to 100%

Consult **US distributor** Lites on West
T: 212.775.6363
E: info@litesonwest.com

² Inserto Medium 65 CL RGB works only with B LIGHT's RGB interface. It is not possible to order the luminaire separately from the RGB interface

OPTIONAL ACCESSORIES

69116/69117	Control unit 24V DC - 48V DC Dimmer interface 0-10V interface				
69117	Control unit 24V DC - 48V DC DMX interface				
69161	RGB remote control				

*To choose the power supply, always add a spare 20% as safety margin.
See pag 597 for cable size and max wiring distance from power supply to last connected luminaire