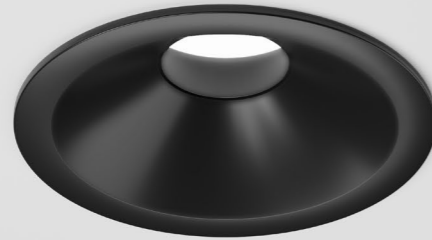


DOT 45 / DOT 45 AD NEW

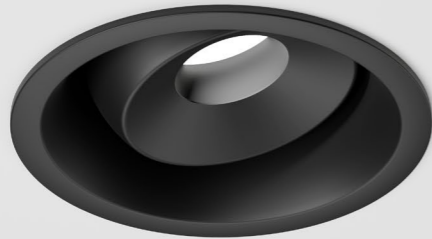


SPECIFICATIONS

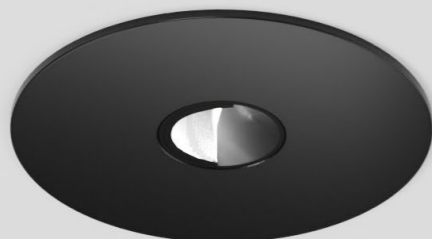
base code	DOT 45 fixed or wallwasher: 64050 - DOT 45 AD adjustable: 64071
typology	Glare free compact downlight with symmetrical or wallwasher light distribution
mounting	In any material using springs (included)
diameter	Fixed and wallwasher 45 mm / 1.8". Adjustable: 45 mm / 1.8"
height	Fixed: 41 mm / 1.6" (4W) - 46 mm / 1.8" (7W) Wallwasher: 26 mm / 1" (4W) - 31 mm / 1.2" (7W) Adjustable: 55 mm / 2.2" (4W) - 60 mm / 2.4" (7W)
required depth	Fixed: 50 mm / 2". Wallwasher: 35 mm / 1.4". Adjustable: 65 mm / 2.6"
ceiling cut out	Fixed and wallwasher: 42 mm / 1.65". Adjustable: 43 mm / 1.69"
construction	Fixture and flange: turning and milling aluminum. Reflector: polycarbonate complete with silicone gasket
finishes	Powder coated. Heat sink anodized
ingress protection	Fixed and adjustable: IP40 or IP65. North America: damp or wet location. Wallwasher: IP30. North America: dry location
lamp type	LED array on printed circuit board. Remote power supply not included
lamp wattage	4W or 7W at 24V DC. For Yacht operating voltage 20V-30V. 3W at 200mA or 6W at 350mA. North America: 3W at 200mA or 6W at 350mA
lamp lumens	4W: 330lm - 7W: 660lm
delivered lumens	4W: 135lm - 7W: 230lm. Wallwasher 4W: 220lm - 7W: 340lm
lumen maintenance	50.000h L90
beam	16° (fixed or pre-tilted by 20°), 36°, 55°, 15°x45° or wallwasher (downlight 25° and wallwasher). Inclination angle adjustable up to 25°
kelvin	Red, 2200K CRI90, 2700K CRI93, 3000K CRI93 or 4000K CRI93 / 3 step MacAdam ellipse
special features	Red light or double circuit red and white for night navigation. Reverse Polarity Protection. Two Wires Dimming. Designed to deliver glare free homogeneous light. The wallwasher offers longitudinal cut-off and delivers homogeneous light from the upper edge of the wall to the floor with no visible dark zones
control protocols	0-10V, DMX or DALI
certifications	CE, ETL listed (certified to UL 2108, CSA C22.2)



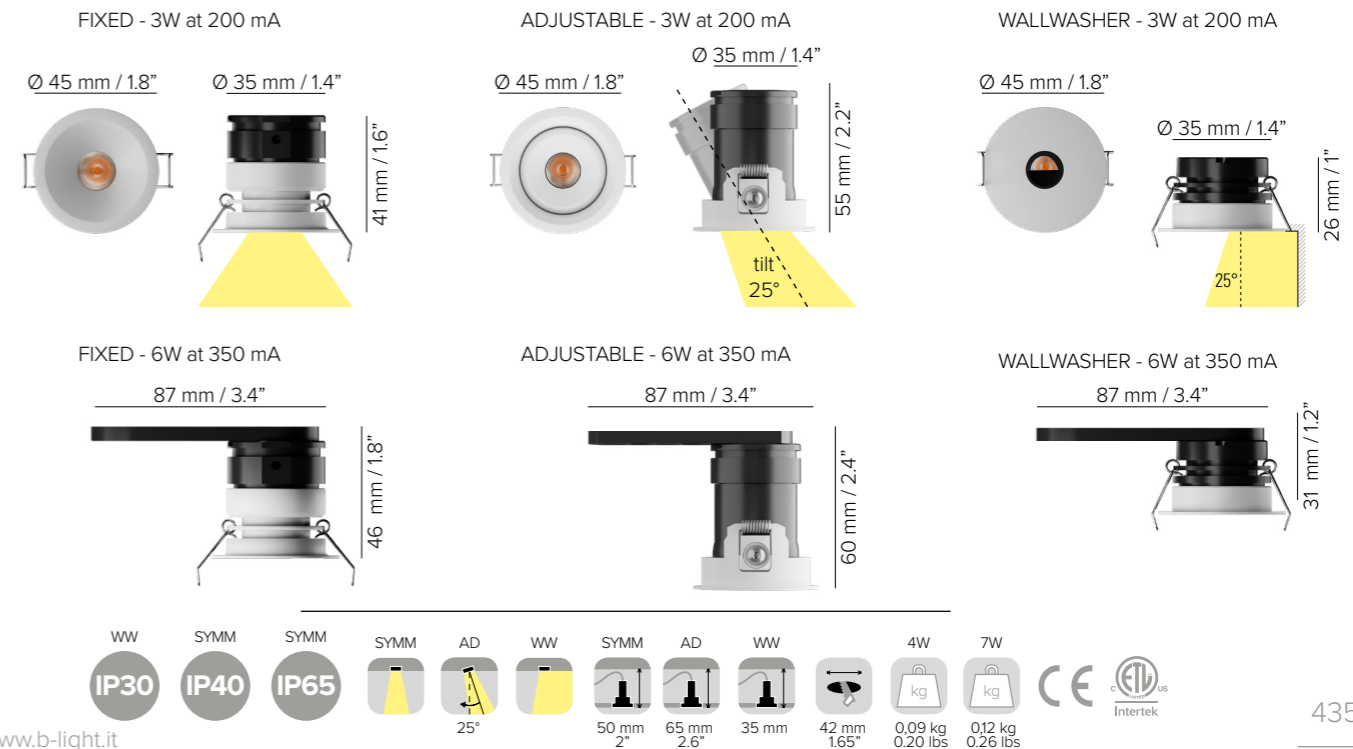
FIXED



ADJUSTABLE



WALLWASHER



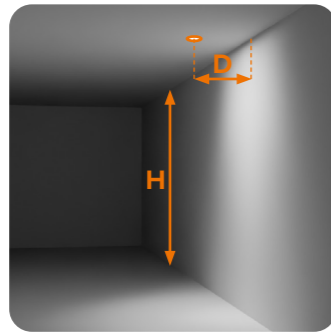
DOT 45

INSTALLATION GUIDE FOR WALLWASHER

FOR A GOOD UNIFORMITY OF LIGHT ON THE WALL, FOLLOW THESE RULES:

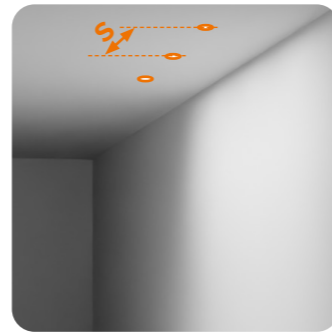
1

The **distance from the wall D** shall be minimum $H / 5$ and maximum $H / 3$



2

The **spacing between luminaires S** shall be minimum the distance **D** from the wall and maximum twice the distance **D x 2** from the wall



DOT 45
4W, 220lm delivered

H 2 m 6' 6"	D _{MIN} 0,4 m 1' 4"	S _{MIN} 0,4 m 1' 4"
		S _{MAX} 0,8 m 2' 7"
	D _{MAX} 0,7 m 2' 2"	S _{MIN} 0,7 m 2' 2"
		S _{MAX} 1,3 m 4' 3"



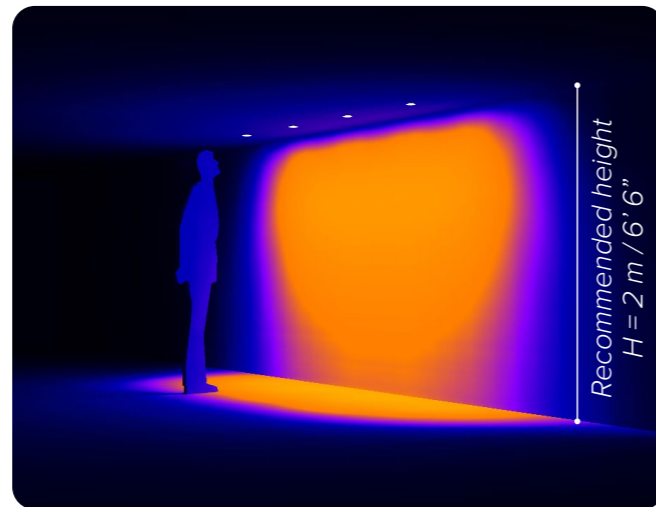
INSIDE 40 R
4W, 220lm delivered

SEE PAGE 371

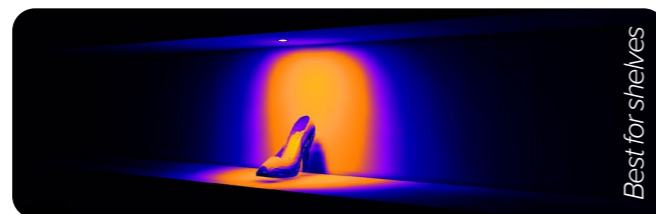


DOT 30
1,5W, 40lm delivered

SEE PAGE 429



20lx 50lx 100lx 200lx



WALLWASHER OPTIONS

FOR DIFFERENT CEILING HEIGHTS



ATRIA X3 R
30W, 2440lm delivered

SEE PAGE 471



INSIDE 120 R
30W, 2440lm delivered

SEE PAGE 399



ATRIA X3 R
23W, 2025lm delivered

SEE PAGE 471



INSIDE 120 R
23W, 2025lm delivered

SEE PAGE 399



ATRIA XS R
10W, 790lm delivered

SEE PAGE 449



INSIDE 75 R
10W, 790lm delivered

SEE PAGE 385



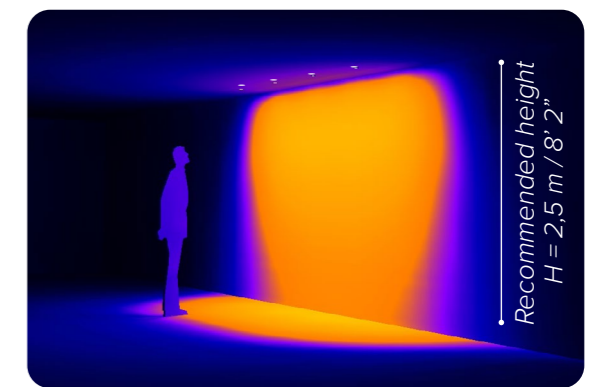
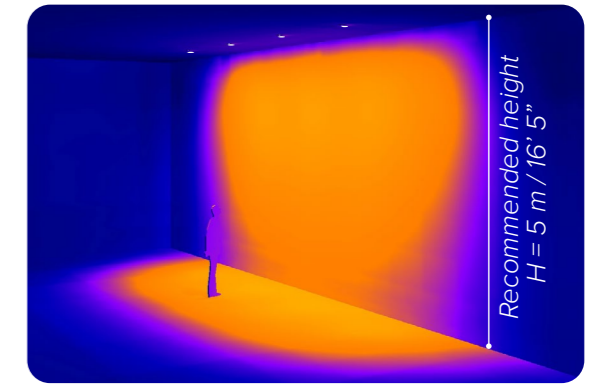
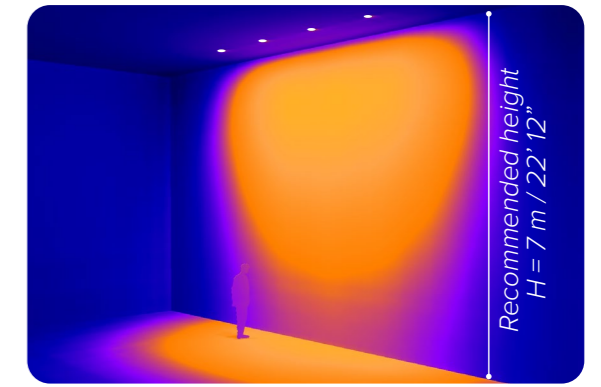
ATRIA 60 P
6W, 570lm delivered

SEE PAGE 443



INSIDE 60 R
6W, 570lm delivered

SEE PAGE 379


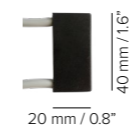

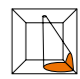



20lx 50lx 100lx 200lx



Since every project is different, use this installation guide as a starting point for your lighting design. To further test the desired effect on your project, use the **photometric files** available on B LIGHT's website.

DOT 45

ORDER CODE

BASE CODE	A . POWER SUPPLY	B . KELVIN	C . BEAM
64050	<p>2 24V DC (20V - 30V) U  listed 200/350 mA power supply NOT included</p>  <p>20 mm / 0.8" 40 mm / 1.6"</p> <p>L 200/350 mA power supply NOT included</p>	<p>4 4000K CRI93</p> <p>5 3000K CRI93</p> <p>N Red + 3000K CRI93¹</p> <p>8 2700K CRI93</p> <p>L Red + 2700K CRI93¹</p> <p>D 2200K CRI90</p> <p>R Red¹</p> <p>¹IP40 ONLY</p>	<p>2 spot 16°</p> <p>4 flood 36° </p> <p>5 wide flood 55°</p> <p>8 oval flood 15° x 45°</p> <p>I spot 16° tilted by 20° </p> <p>C black wallwasher </p>


Example: BASE CODE A B C D E F
64050 2 5 5 2 A A = 64050-2552AA

D . FINISHES	E . INGRESS PROTECTION	F . OUTPUT
<p>2 black RAL 9005 </p> <p>6 white RAL 9003 </p>	<p>wallwasher</p> <p>A IP30</p> <p>fixed</p> <p>B IP40</p> <p>C IP65</p>	<p>A 4W (24V DC) 3W (200 mA) </p> <p>B 7W (24V DC) 6W (350 mA) </p>

ACCESSORIES

REQUIRED ACCESSORIES - NOT INCLUDED

	code	output power	input voltage	frequency	IP	dimensions mm	through cut out
Power supply 24V DC*, ON/OFF max No. fixtures	69041	18W / max 2	198-264V	50-60Hz	IP20	L124xW42xH30	NO
	69054	60W / max 8	90-305V	47-63Hz	IP67	L162xW43xH32	NO
Power supply 24V DC*, DALI max No. fixtures	69204	20W / max 2	99-264V	50-60Hz	IP20	L103xW67xH21	NO
Power supply 24V DC*, 1-10V max No. fixtures	69212	20W / max 2	99-264V	50-60Hz	IP20	L103xW67xH21	NO
Power supply 200 mA max No. fixtures	69121	ON/OFF, 8W / max 2	90-264V	50-60Hz	IP20	L115xW34xH19	NO
	69122	1-10V, 10W / max 3	99-264V	50-60Hz	IP20	L111xW52xH22	NO
	69123	DALI, 10W / max 3	198-264V	50-60Hz	IP20	L147xW44xH22	NO
Power supply 350 mA max No. fixtures	69086	ON/OFF, 15W / max 2	90-264V	50-60Hz	IP20	L115xW34xH19	NO
	69090	1-10V, 18W / max 2	99-264V	50-60Hz	IP20	L120xW52xH22	NO
	69079	DALI, 17W / max 3	110-240V	50-60Hz	IP20	L120xW52xH22	NO

Class 2 power supply 200 mA 350 mA  listed
 Consult **B LIGHT North America** Lighting Group Network
 T: 212.775.6363
 E: info@lightinggroupnetwork.com



