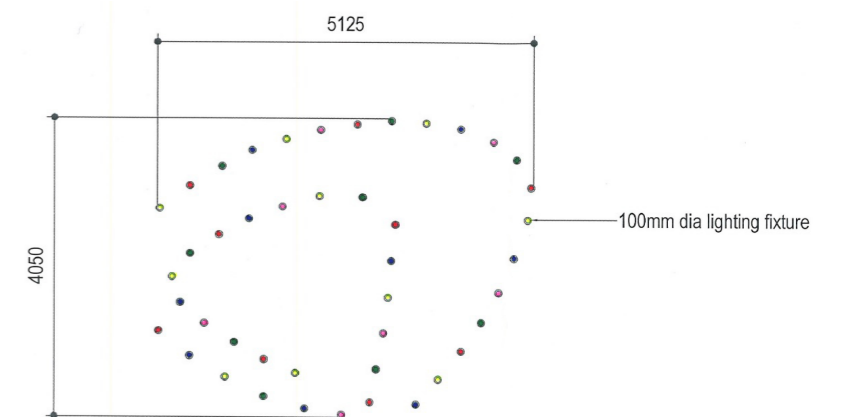




# DALI PIPE STRUCTURE

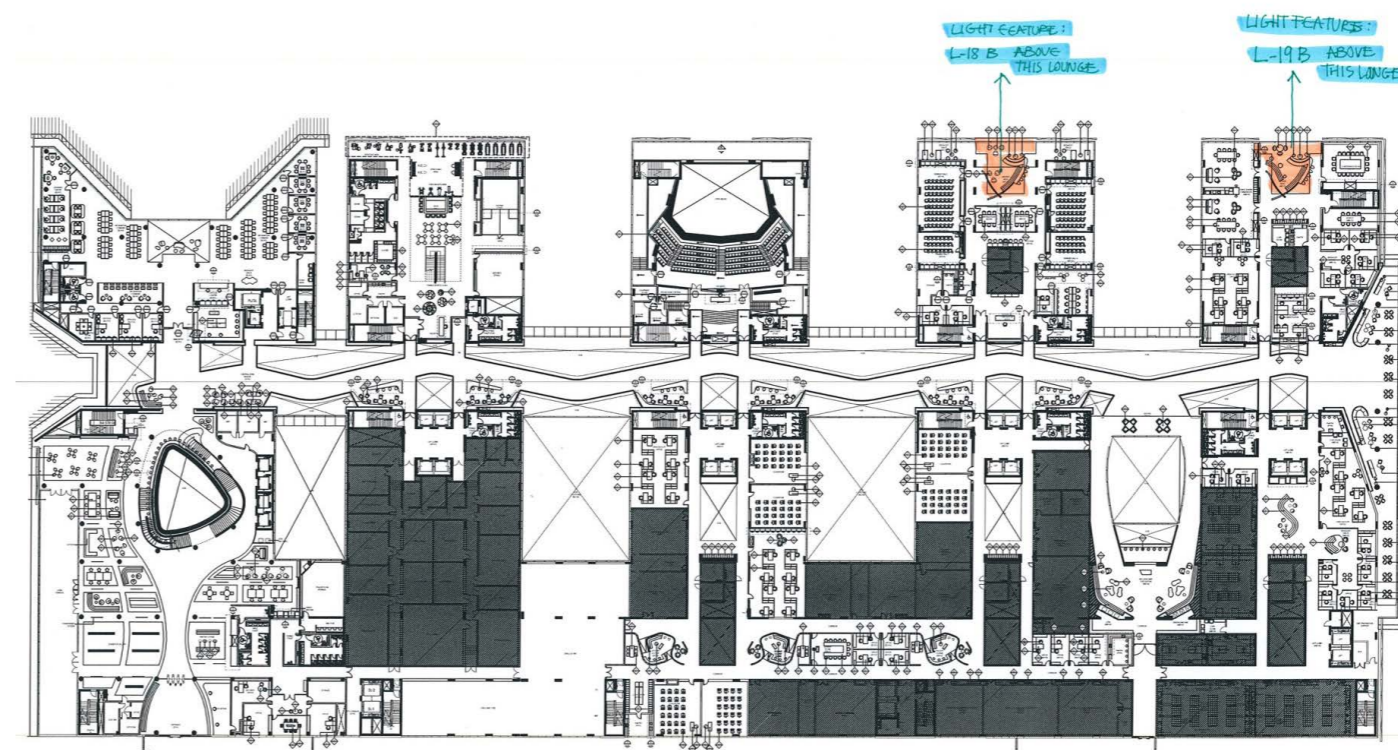
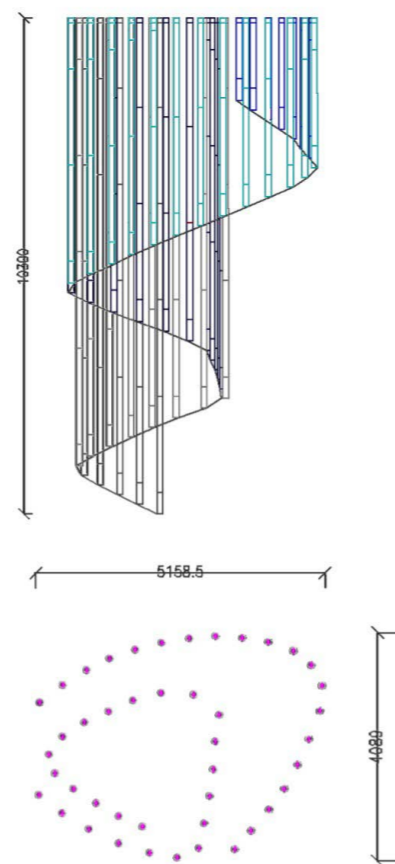
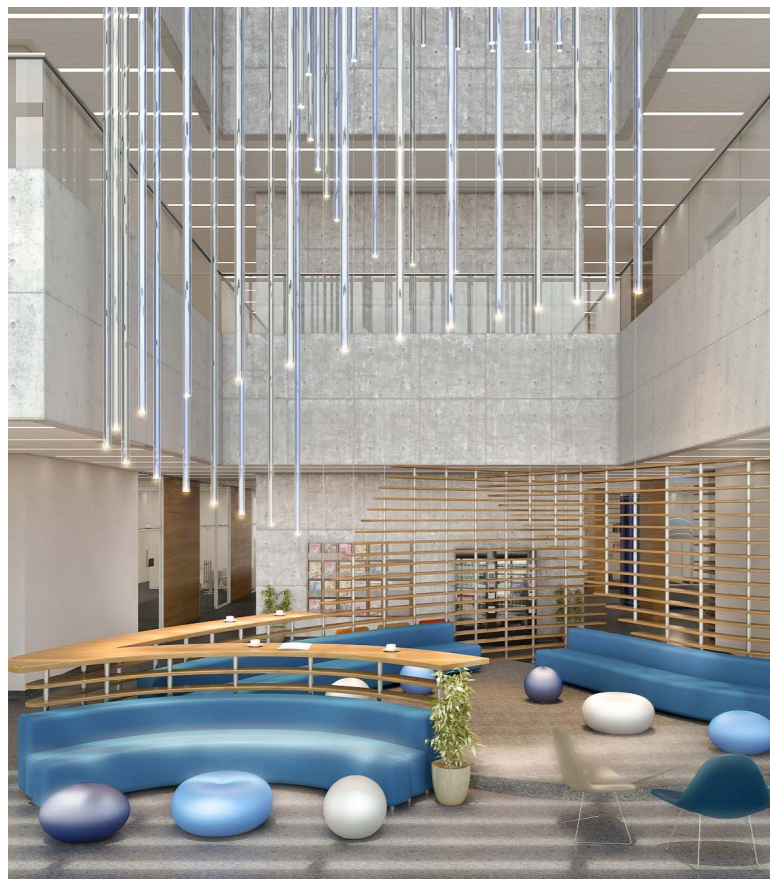
## SPECIFICATIONS

year	2016
project	Khalifa University, Abu Dhabi - United Arab Emirates
typology	<b>Five pipe structures in two sizes. Each structure consisting of 44 pipes</b> with heights ranging from 0,22 m to 12 m
mounting	To ceiling by fixing base
diameter	100 mm
height	From 0,22 m up to 12 m
construction	Fixture: turning and milling aluminum. Reflector and protective glass in polycarbonate
finishes	Powder coated. Ten different RAL colours
ingress protection	IP30
lamp quantity	1
lamp type	Power LED. Remote DALI power supply
lamp wattage	6W each pipe at 350 mA
special features	<b>DALI dimmable</b>
beam angle	36°
colour temperatures	3000K CRI93
lamp lumens	420lm
lumen maintenance	50.000hrs lifetime with lumen maintenance at L70
dimming options	DALI
certifications	CE



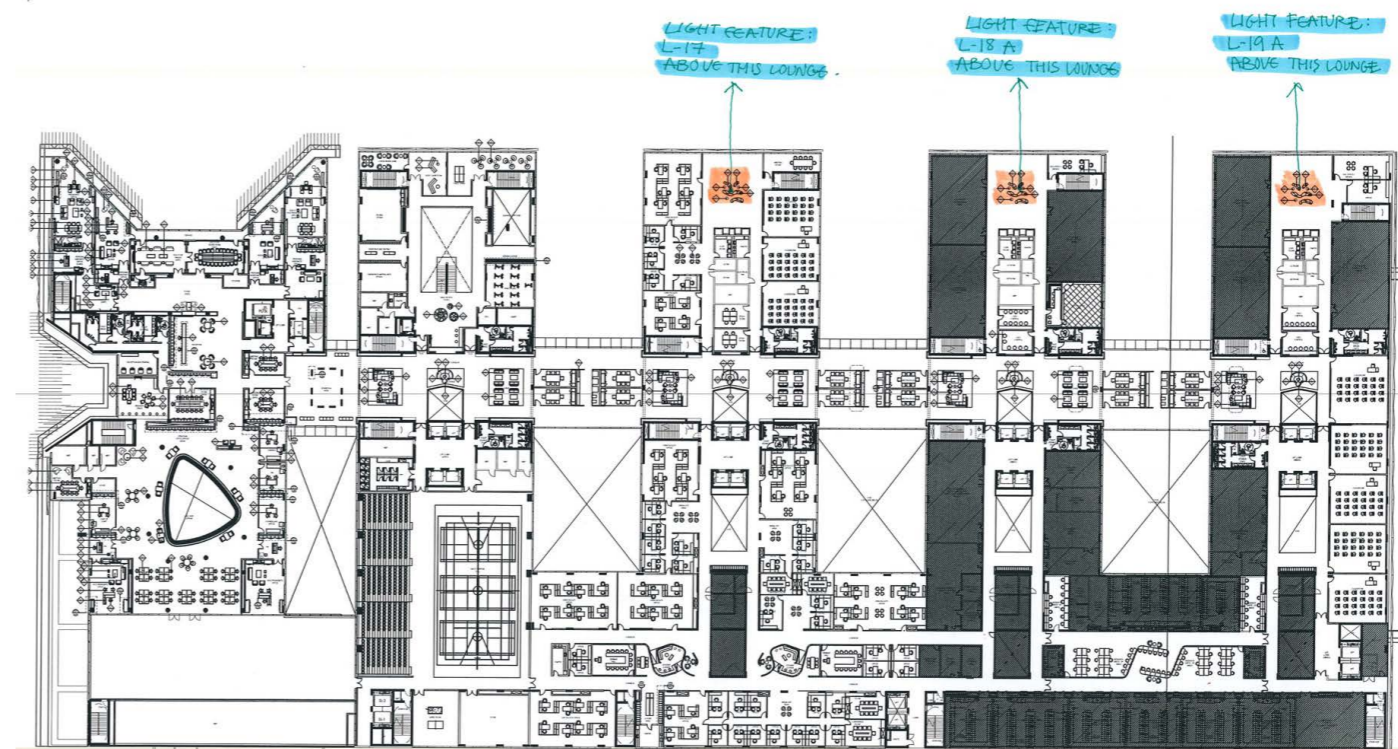
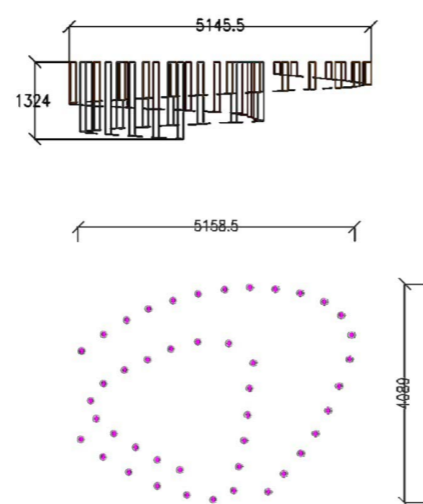


**TYPE 1: TWO STRUCTURES**



1<sup>st</sup> floor Furniture Layout.  
Not to Scale.  
\* REFER TO SKETCH 1 A

**TYPE 2: THREE STRUCTURES**



2<sup>nd</sup> floor Furniture Layout.  
Not to Scale.  
\* REFER TO SKETCH 1 A