



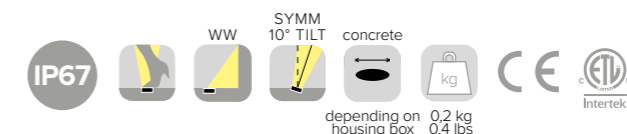
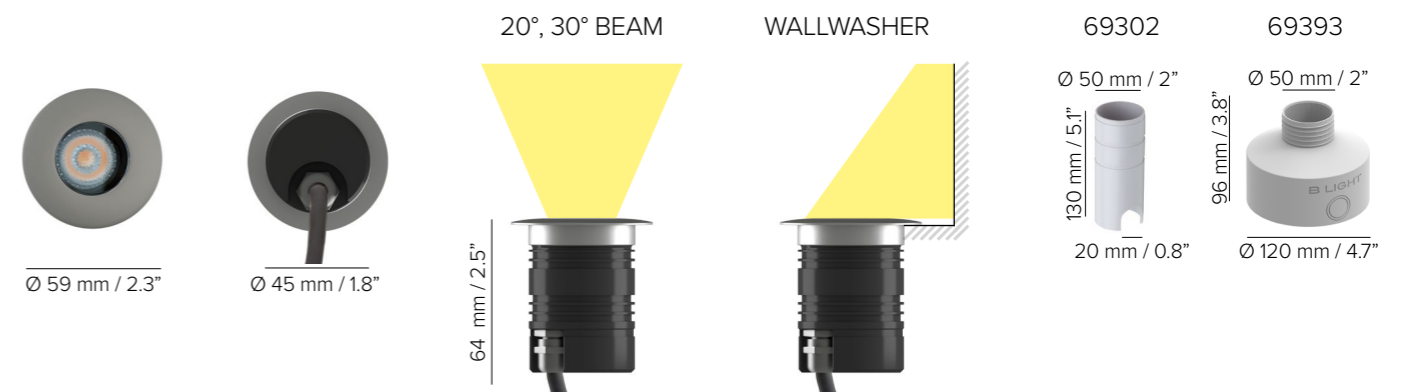
ATRIA IN: WALLWASHER

ATRIA IN ^{NEW}



SPECIFICATIONS

base code	66087
typology	Walkover uplight with optics on a 10° tilt for low glare or wallwasher
mounting	Using o-ring (included) and housing box to be separately ordered as accessory
diameter	59 mm / 2.3"
height	64 mm / 2.5"
required depth	130 mm / 5.1"
first fit requirement	Yes, separate housing box for concrete (code 69302 or code 69393)
floor cut out	Depending on housing box
construction	Turning and milling aluminum or stainless steel AISI 304. Lens 20° and 30°: PMMA. Wallwasher reflector: polycarbonate. Protective glass in PMMA complete with silicone gasket. Housing box in ABS (code 69393) or PVC (code 69302)
finishes	Bezel: stainless steel AISI 304 or powder coated. Heat sink anodized
ingress protection	IP67. North America: wet location. Built-in protection from water infiltration and moisture
lamp type	LED array on printed circuit board. Remote power supply not included
lamp wattage	5W at 24V DC. Wallwasher: 3W at 24V DC. For Yacht operating voltage 20V-30V
delivered lumens	310lm (3000K CRI93, 30°). Wallwasher: 140lm
lumen maintenance	50.000h L80
beam	20°, 30°. Optics on a 10° tilt for low glare. Honeycomb for visual comfort to be specifically ordered. Pure wallwasher: 5° - 75° towards the wall
kelvin	2200K CRI80, 2200K CRI90, 2700K CRI93, 3000K CRI93, 4000 CRI93 / 3 step MacAdam ellipse
special features	Reverse Polarity Protection. Thermal Sensor. Safe Wiring. Two Wires Dimming. Water Stop Technology. The wallwasher offers longitudinal cut-off and delivers homogeneous light from the upper edge of the wall to the floor with no visible dark zones. Because light is precisely focused towards the wall, the luminaire is compliant with the rules against light pollution
control protocols	0-10V, DMX or DALI
certifications	CE, ETL listed (certified to UL 2108, CSA C22.2)



depending on housing box 0.2 kg / 0.4 lbs

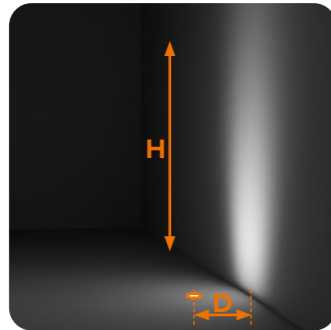
ATRIA IN

INSTALLATION GUIDE FOR WALLWASHER

FOR A GOOD UNIFORMITY OF LIGHT ON THE WALL, FOLLOW THESE RULES:

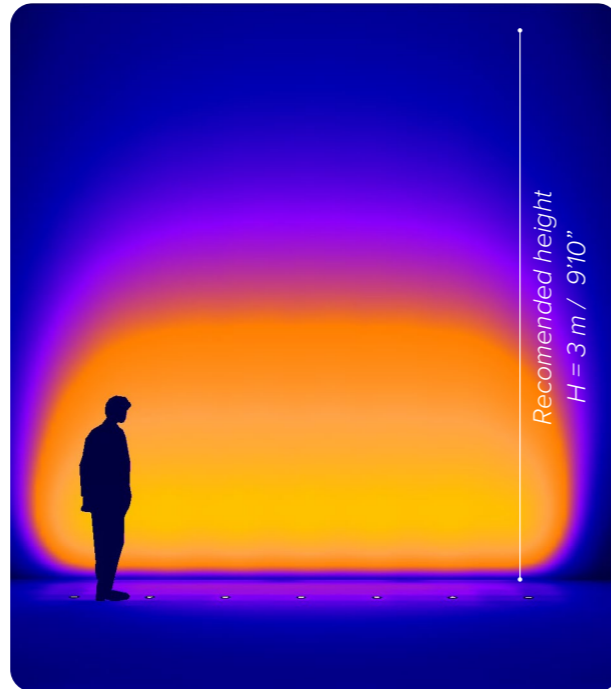
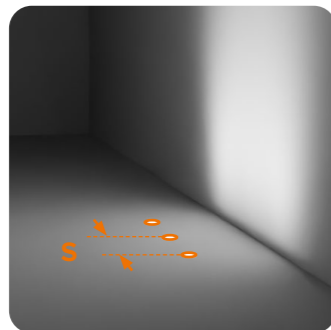
1

The **distance from the wall D** shall be $H / 5$



2

The **spacing between luminaires S** shall be $D \times 0,8$



Example

H	3 m / 9' 10"	D	$H / 5 = 0,6 \text{ m} / 24"$
S		S	$D \times 0,8 = 0,5 \text{ m} / 20"$

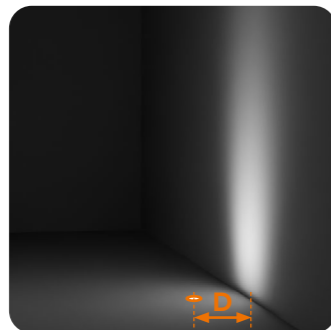
20lx 50lx 100lx 200lx

INSTALLATION GUIDE FOR 20° AND 30° BEAM ANGLE

FOR A GOOD UNIFORMITY OF LIGHT ON THE WALL, FOLLOW THESE RULES:

1

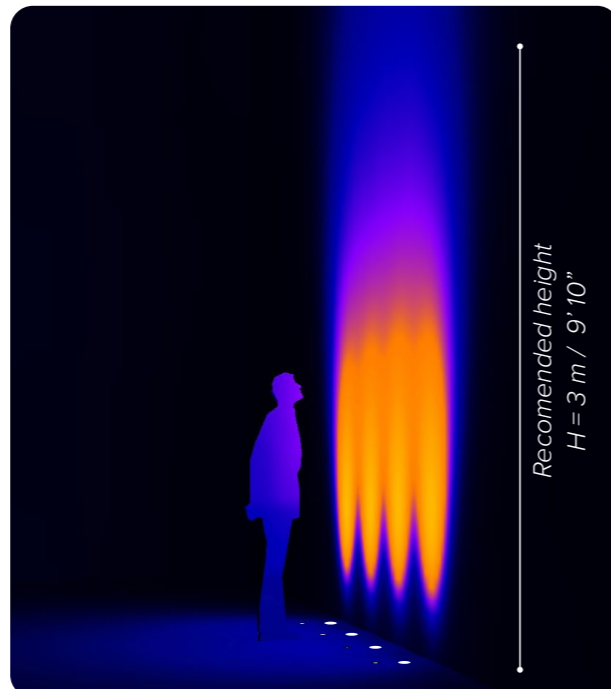
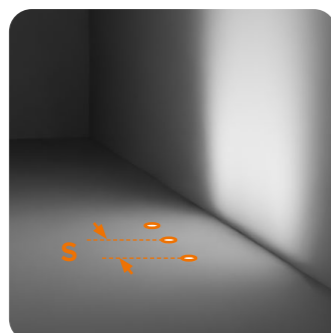
The **distance from the wall D** shall be 0,2 - 0,3 m / 8" - 12"



2

The **spacing between luminaires S** and the **distance from the wall D** shall be:

S, spot 20° = 0,3 m / 12"
S, flood 30° = 0,4 m / 16"



20lx 50lx 100lx 200lx

Since every project is different, use this installation guide as a starting point for your lighting design. To further test the desired effect on your project, use the **photometric files** available on B LIGHT's website.

ATRIA IN

ORDER CODE

BASE CODE

66087

A . POWER SUPPLY

2 24V DC (20V - 30V)
FOR YACHT ONLY
power supply
NOT included



9 24V DC
power supply
NOT included

R listed
24V DC
power supply
NOT included

B . KELVIN

4 4000K CRI93

5 3000K CRI93

8 2700K CRI93

D 2200K CRI90
WALLWASHER
ONLY

I 2200K CRI80

C . BEAM

2 spot 20°

4 flood 30°

W wallwasher

Example: BASE CODE

66087

A B C D E

2 8 W F B = 66087-28WFB

D . FINISHES

A grey
RAL 9006

F golden
bronze

R stainless steel
bezel, anodized
body

E . LENS

A honeycomb
20°, 30°
ONLY

B clear

WALLWASHER OPTIONS

FOR DIFFERENT CEILING HEIGHTS



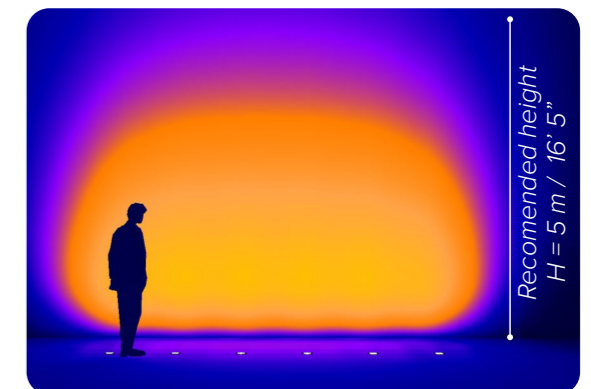
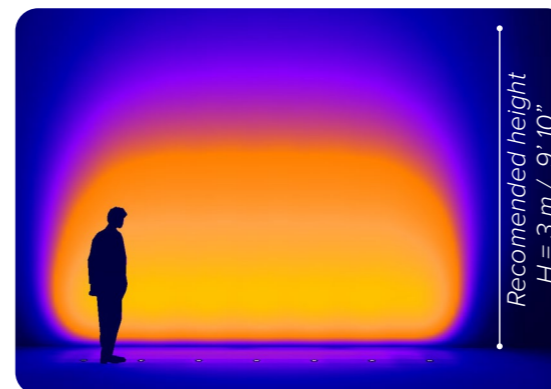
MEROPE 100 WW
8W, 430lm delivered

SEE PAGE 51



MEROPE 140 WW
16W, 570lm delivered

SEE PAGE 63



ATRIA IN

ACCESSORIES



ATRIA IN: 30° BEAM

REQUIRED ACCESSORIES - NOT INCLUDED



Power supply
24V DC*, ON/OFF
ambient temperature up to 60° C

code	description	dimensions mm
69302	indoor housing box for concrete	Ø50xH130
69393	outdoor housing box for concrete	Ø120xH96

Power supply
24V DC*, DALI

code	output power	input voltage / frequency	IP	dimensions mm
69041	18W	198-264V	50-60Hz IP20	L124xW42xH30
69061	40W	90-305V	47-63Hz IP67	L171xW62xH37
69062	60W	90-305V	50-60Hz IP67	L171xW62xH37

Power supply
24V DC*, 0-10V

69220	120W	90-305V	47-63Hz IP65	L191xW63xH38
69215	60W	90-305V	47-63Hz IP65	L150xW53xH35

Class 2 power supply
24V DC*



Consult **B LIGHT North America**
Lighting Group Network
T: 212.775.6363
E: info@lightinggroupnetwork.com



code	description	dimensions mm
69865	IP68 connector, 1 IN - 1 OUT, 2 wires	W37xD22xH37
69847	IP68 connector, 1 IN - 3 OUT, parallel wiring, 2 wires	W45xD30xH17

*To choose the power supply, always add a spare 20% as safety margin.
See pag 519 for cable size and max wiring distance from power supply to last connected luminaire